

The logo for AdaWall features a stylized 'A' composed of three parallel, slanted bars on the left, followed by the text 'AdaWall' in a bold, sans-serif font.

**AdaWall**



# **CONTENT**

## **WALLPAPER CATALOGUES**

04	DANTE
10	SEYYAH
16	OCTAGON
22	SIGNATURE
28	TROPICANO
34	ADAKIDS
40	SEVEN
46	BETA
52	RUMI
58	KALINKA
64	INDIGO
70	ALFA
76	ANKA

## **MURAL CATALOGUES**

82	FIJI
90	AMAZON
98	MOULDING
106	ADAKIDS

## **MURAL TEXTURES & MATERIALS**

116	<b><u>ACOUSTIC WALLPAPER</u></b>
122	<b><u>WALLPAPER ADHESIVE</u></b>

# Do You Know About ADAWALL ?



## PHILOSOPHY OF ADAWALL

AdaWall takes place in the sector with all international qualification documents. It has an unique design approach, advance production technology, world-class packaging shipments and understanding to provide after-sales customer satisfaction in the real sense. Harmony between craftsmanship that creates lasting value and advanced technology that reproduces every detail.

This is AdaWall's product philosophy for creating the finest wallpapers, curtains and pillows.

AdaWall 17.000 m2 açık, 15.000 m2 kapalı olmak üzere, toplamda 32.000 m2 alana sahip Türkiye'nin en büyük duvar kağıdı tesisidir.

AdaWall, bugüne kadar çalıştığı iş ortaklarının güvenini tam anlamıyla kazanmış olup günümüzün yoğun ve rekabetçi pazarında kalıcı ve sağlam bir yer edinebilmek için, daima farklı olmanın, yenilikleri ilk sunabilmenin ve profesyonelleşmenin ışığında yürümeyi hedeflemiştir.

AdaWall ürün ve hizmet kalitesini, verimliliği ve çevreciliği esas almış, duvar kağıdı üretiminde su bazlı ve çevreci hammaddeler kullanmaktadır.

Bizim için;

İyi tasarım YENİLİKÇİDİR.  
İyi tasarım KULLANIŞLIDIR.  
İyi tasarım ESTETİKTİR.

## FOLLOW US!



#Adawallpaper

www.adawall.com.tr



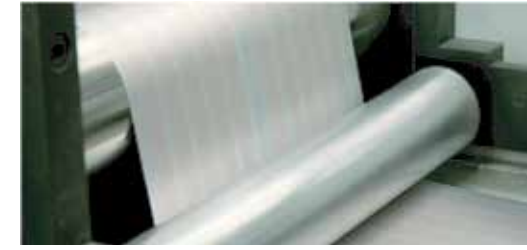
## PRECISION PRINTING TECHNOLOGY

Precision printing is inspired by photography and materials from the environment. Our technology reproduces every detail, even the fine lines that are too small for the naked eye. The rich tones and exquisite beauty created by advanced technology are what set AdaWall's Vas wallpaper, our designs are printed using the gravure technique, which is a world-class printing method for achieving maximum detail and tone.



## 100% PURE WATER BASED INKS

High quality and precise printing begins with the finest ingredients. Water-based inks from Netherlands and Korea realize superb colour reproduction plus environment-friendly manufacture. What completes 100% pure water-based inks is the GSE colour dispenser, which provides optimized dispensing solutions.



## CYLINDERS DESIGNED TO DELIVER PINPOINT ACCURACY

Precision printing can only be utilized with precisely engraved print cylinders that replicate even the minutest details. Embossing sheets of nonwoven and paperback using a steel embossing roller and paper ball work in conjunction with each other.



## STRICT QUALITY CONTROL SYSTEM

AdaWall's extensive expertise in quality management enables the production of the World's Finest Products. The process of quality is supported by a specialized line inspector. Specialized line inspectors are checking at key sections to support the process of quality management, which is capped by a rigorous final inspection. All the finished products are put to test and trial application.



## ENVIRONMENTAL RESPONSIBILITY

In AdaWall factory, we are aware of our responsibilities towards the environment and also we are wholly committed to improving manufacturing processes in line with this. We choose to work only ethical and accredited suppliers' products and we make business decisions based on the impact on the wider, global environment. The selection of ingredients is critical in creating a truly premium product too.

## CERTIFICATIONS



CE

ISO 9001

ISO 9001

ISO 14001

ISO 10002

OHSAS 18001

Fire Retardant



# DANTE

## NON-WOVEN BACK 1.06 M X 10M

**TR** Dante Alighieri, üstün yetenekleri sayesinde döneminin klasikçileri ile rekabet ederek Rönesans döneminin öncüsü olmayı başaramış bir sanatçıdır. Yeni ile eskiyi cesurca bir araya getirip harmanlayarak, döneminin klasik eserlerine farklı bir soluk getirmiştir. Sanatını mutluluk ile harmanlayarak, estetiği güzel başlangıçlara dönüştürmüştür.

Bu kataloğumuzu döneminin öncüsü Dante'ye ithafen hazırladık, aynı cesaret ve yetenek ile yeni ve eskiyi harmanlayarak estetik damask desenlerini modern dünyanın izleriyle birleştirerek yepyeni bir forma ulaştırmayı hedefledik. Dante Koleksiyonun ait desenlerimiz mutluluğu ve estetiği evlerinize taşıyarak, en güzel başlangıçlarınıza eşlik edebilecek. Bu koleksiyon Dante'nin izinde geçmişin ve bugünün güzel bir birleşimidir.

Adawall olarak bu eşsiz yolculukta tarihi ve bugünü doyusya hissetmeye sizleri davet ediyoruz.

**EN** Dante Alighieri is an artist who succeeded in being the pioneer of the Renaissance period by competing with the classicists of his time, thanks to his superior talents. By boldly bringing together and blending the new with the old, he breathed new life into the classical works of his period. He syncretized his art with happiness and has transformed aesthetics into beautiful beginnings.

We have prepared this catalog in tribute to Dante, the pioneer of his time, with the same courage and talent, we aimed to bring the aesthetic damask patterns into a brand new form by combining the new and the old with the traces of the modern world. Our patterns from the Dante Collection will be able to accompany your most beautiful beginnings by bringing happiness and aesthetics to your homes. This collection is a beautiful combination of the past and the present in the footsteps of Dante.

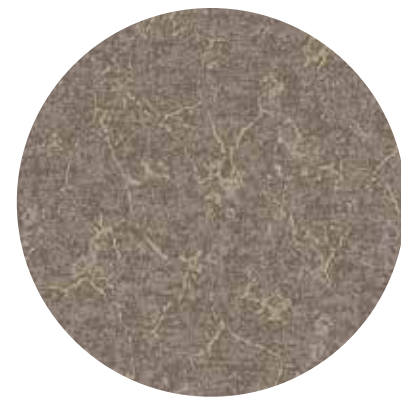
As Adawall, we invite you to feel the history and today to the fullest on this unique journey.

**RU** Данте Алигьери — художник, которому удалось стать основоположником эпохи Возрождения. Благодаря своим превосходным талантам, с легкостью соперничая с классицистами своего времени, смело соединяя и смешивая новое со старым, он вдохнул новую жизнь в классические произведения. Он объединил свое искусство с частичкой счастья и успешно превратил эстетику в прекрасное начало.

Мы подготовили этот каталог в честь Данте, первооткрывателя, с таким же мужеством и талантом стремясь привести эстетические дамасские узоры в совершенно новую форму. Ваши самые прекрасные начинания будут сопровождаться нашими непревзойденными дизайнами из коллекции Dante, принося радость и величественность в ваш дом. Эта коллекция представляет собой несравненное сочетание прошлого и настоящего, следуя по стопам Данте Алигьери.

Adawall приглашает вас в полной мере ощутить могущественную историю и сегодняшний день в этом уникальном пути.

1401 SERIE



1401-1

1401-2

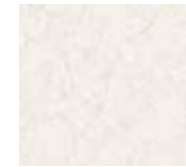
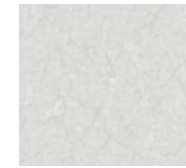
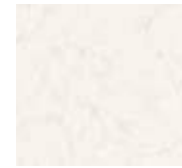
1401-3

1401-4

1401-5

1401-6

1406 SERIE



1406-1

1406-2

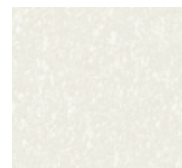
1406-3

1406-4

1406-5

1406-6

1408 SERIE



1408-1

1408-2

1408-3

1408-4

1408-5

1405 SERIE



1405-1

1405-2

1405-3

1405-4

1405-5

# DANTE

1.06 M X 10M / NON-WOVEN BACK  
PATTERNS



1401-1



1401-2



1401-3



1401-4



1401-5



1406-5



1406-6



1407-1



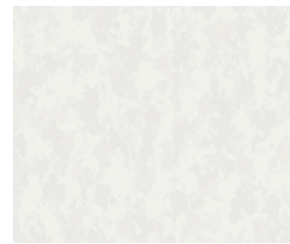
1407-2



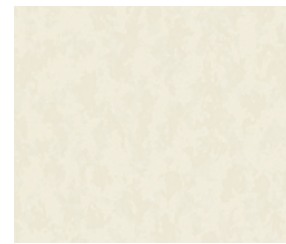
1407-3



1401-6



1402-1



1402-2



1402-3



1402-4



1407-4



1407-5



1408-1



1408-2



1408-3



1402-5



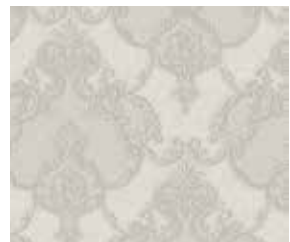
1403-1



1403-2



1403-3



1403-4



1408-4



1408-5



1409-1



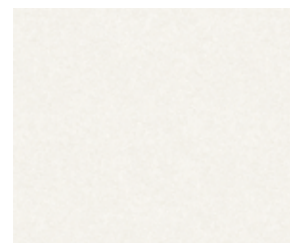
1409-2



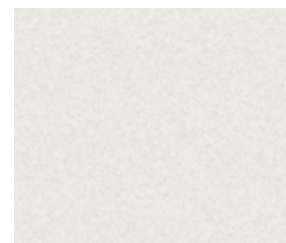
1409-3



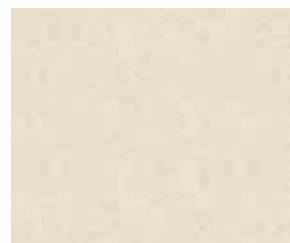
1403-5



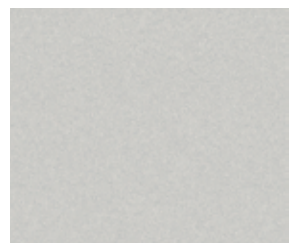
1404-1



1404-2



1404-3



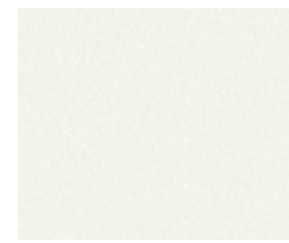
1404-4



1409-4



1409-5



1410-1



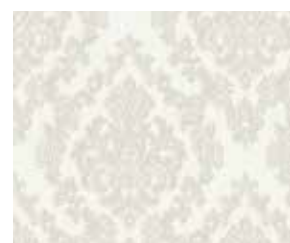
1410-2



1410-3



1404-5



1405-1



1405-2



1405-3



1405-4



1410-4



1410-5



1410-6



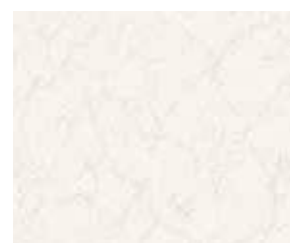
1410-7



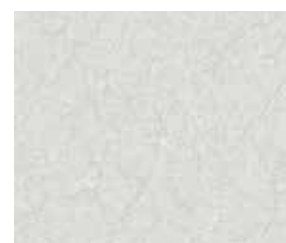
1411-1



1405-5



1406-1



1406-2



1406-3



1406-4



1411-2



1411-3



1411-4



1411-5

TR DANTE DESEN / RENK : 11/59  
EN DANTE PATTERN / COLOUR : 11/59  
RU DANTE ДИЗАЙН / ЦВЕТ : 11/59



# SEYYAH

NON-WOVEN BACK  
1.06 M X 10M

**TR** Bilge bir seyyah, herkesin takdir edeceği manzaraları bulma umuduyla diyar diyar dolanır dururmuş. Yedi düvelde görmediği, gezmediği yer kalmayana kadar seyahatlerine devam etmiş. Günlerden bir gün kendini ufak bir köyde bulmuş. Bu köyde insanların hepsi gülümser şarkılar söylüyor. İlk gördüğü yerliye sebebini sormuş "Ben her yere gezer dururum, ancak bu kadar mutlu insanı ilk defa bir arada gördüm. Neden herkes bu kadar neşelidir burada?". Adam Seyyah'a dönmüş ve "Etrafına bak, ama dikkatli bak. İşte o zaman anlarsın. Biz her günün kıymetini bilip sürekli gördüğümüz manzaraları takdir etmeyi öğrendik." demiş. Seyyah başını kaldırmış ve çevresine baktığında aklına gelen tek bir kelime olmuş: "zamansız". Gezdiği yerlerde dikkatini sürekli gördüklerine hiç vermediğini fark etmiş. Aslında aradıkları her daim gözünün önünde, klasiklerin içindeymiş. Adawall olarak farklı desenleri çok seviyoruz. Ancak gezginler gibi her yeri dolaşsak de farklılıktan sonra durgunluğa ve klasiğe dönüşü de takdir ediyoruz. Seyyah koleksiyonu da bize tam olarak bunu hatırlatıyor. Zamana yenik düşmeyen, her daim ilgi görecektir klasik desenler ve renkleri bu koleksiyonumuzda sizlere sunuyoruz. Seyyah; seyahat eden, uzak ülkeleri gezip dolaşan gezgin olarak tanımlanmakta. Yeni koleksiyonumuz Seyyah da, sizi diyar diyar gezdirip yine dinginlikte huzur bulmaya davet ediyor.

**EN** A wise traveler would wander the land in hopes of finding sights that would be appreciated by all. He continued his travels until there was no place he had not seen nor visited in the seven heifers. One day he found himself in a small village. All the people in this village were smiling and singing. He asked the first local he saw why "I always travel, but this is the first time I've seen so many happy people together. Why is everyone so cheerful here?". The man turned to the Traveler and said, "Look around, but look carefully. That's when you'll understand. We learned to live every moment of the day and appreciate the sights we see all the time." When the traveler looked up and looked around, only one word came to mind: "timeless". He noticed that he did not always pay attention to what he saw constantly in the places he visited. What he was seeking has always been in front of his eyes, in the classics. As Adawall, we love different patterns. Although we seek everywhere like travelers, we also appreciate the return to stillness and classicism after difference. The Seyyah collection reminds us of exactly this concept. In the collection, we offer you classic patterns and colors that do not age with time and will always attract attention. Seyyah, which means a constant traveler who wanders far away lands, invites you to tour the land and find peace in the stillness.

**RU** Мудрый странник бродил по земле в надежде найти достопримечательности, которые бы оценили все. Он продолжал свое путешествие, пока во всем мире не осталось места, которое он не видел и не посещал. Однажды он оказался в небольшой деревне. Все люди в этой деревне улыбались и пели. Странник спросил у первого попавшегося местного жителя, которого он увидел: «Я всегда путешествую, но впервые вижу столько счастливых людей вместе. Почему здесь все такие веселые? » Мужчина повернулся к Страннику и сказал: «Посмотри вокруг, но посмотри внимательно и тогда ты поймешь. Мы научились жить каждое мгновение дня и ценить достопримечательности, которые видим постоянно ». Когда странник поднял глаза и огляделся, на ум пришло только одно : «неподвластно времени». Он заметил, что не всегда обращал внимание на то, что постоянно видел в тех местах, которые посещал. То, что он искал, всегда было у него на виду, в классике. Мы, Adawall, любим разные мотивы в дизайне. Мы как странники, везде пытаемся найти гармонию и красоту, ценя при этом спокойствие и классицизм. Коллекция Seyyah напоминает нам именно об этой концепции. В этой коллекции мы предлагаем вам классические узоры и цвета, которые не стареют со временем и всегда будут привлекать внимание. Seyyah - вечный странник, который блуждает по далеким землям, приглашая вас совершить путешествие по миру и обрести покой в тишине.

1305 SERIE



1308 SERIE



1303 SERIE



1310 SERIE





# SEYYAH

1.06 M X 10M / NON-WOVEN BACK  
PATTERNS



TR SEYYAH DESEN / RENK : 13/65  
EN SEYYAH PATTERN / COLOUR : 13/65  
RU SEYYAH ДИЗАЙН / ЦВЕТ : 13/65

# OCTAGON

NON-WOVEN BACK  
1.06 M X 10M

TR Geometrik şekillerin de aynı insanlar gibi birtakım karakteristik özellikleri vardır. Bu sayede tanımlanır ve sonsuz düzlemin bir parçası haline gelirler. “Sekizgen”, “sekiz açısı ve kenarı olan şekil” anlamına gelen “Octagon” da geometrinin beşgen, altıgen, yedigen gibi popüler çokgenlerinden biridir.

Sonsuz düzlemdeki şekillerden ilhamla, tasarım sürecinde bağımsız estetik anlayışını benimsediğimiz yepyeni bir koleksiyon seçkisi hazırladık. Modernliğin ve şıklığın aynı ölçüde ve ustalıklı harmanlandığı, geometrik şekillerin ve modern mimari esintilerin çağdaş tasarımla buluştuğu, birbirinden iddialı ve göz alıcı desenlerin hakim olduğu Octagon koleksiyonu sizlerle. Benzersiz ürün içeriği ile size özel eşsiz ve vizyonel bir yaşam alanı deneyimi vad ediyor.

Hayal gücünüz kadar güçlü çizgilere, bir duvar kağıdı koleksiyonunda bulabileceğinizi hayal dahi edemeyeceğiniz ikonik bir tasarım yeniliğine sahip. Üstelik gümüşün, altının, vizonun muhteşem zarif dokusuyla gözlerinize inanamayacağınız kadar sihirli. Koleksiyon portföyümüz genişledi, fakat sihir hiç değişmedi. Yeni koleksiyonumuz Octagon ile sizleri bir kez daha şaşırtmaya hazırız.

EN Geometric shapes also have some characteristic features just like people. They are defined and being a part of infinite plane through these features. “Octagon” means shape has eight borders is one of the popular polygons in geometry such as pentagon, hexagon and heptagon.

Being inspired by geometric shapes in the infinite plane, we embraced an independent aesthetic concept and prepared a very new collection book for you. Octagon is a wallpaper collection that modernity and elegance are blended in the same measurements with great skill, where geometric shapes and modern architectural breeze meet contemporary design and glorious and eye catching designs have a dominant role. Thanks to its very different content, it promises a visional and unique experience that is special for you.

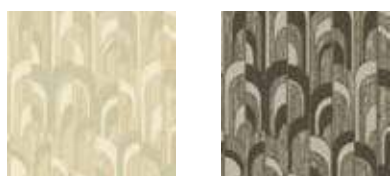
It has strong lines, strong as your imagination and has iconic design innovations that you can never imagine that you may find in a wallpaper collection book. Moreover, it seems magical through the magnificent classy textures of colours such as silver, gold and mink. Our collection portfolio expanded but the magic is never changed. We are very ready to surprise you one more time.

RU Геометрические формы также имеют некоторые характерные черты, как и люди. Они определены и являются частью бесконечного плана через эти особенности. «OCTAGON» означает, что форма имеет восемь границ. Это один из популярных многоугольников в геометрии, такой как пятиугольник, шестиугольник и семиугольник.

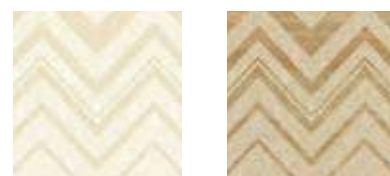
Вдохновленные геометрическими формами в бесконечной плоскости, мы приняли независимую эстетическую концепцию и подготовили для вас совершенно новую коллекцию. OCTAGON - это коллекция обоев, в которой современность и элегантность сочетаются в одних и тех же размерах с большим мастерством, где геометрические формы и современный архитектурный ветер сочетаются с современным дизайном, а великолепный и привлекательный дизайн играет доминирующую роль. Благодаря совершенно разному содержанию, он обещает уникальные визуальные впечатления, которые будут особенными для вас.

У него сильные линии, сильные, как ваше воображение, и знаковые дизайнерские инновации, которые вы даже не можете себе представить, которые вы можете найти в книге о коллекциях обоев. Более того, он кажется волшебным благодаря великолепной классической фактуре таких цветов, как серебро, золото и норка. Наш портфолио коллекций расширился, но волшебство не изменилось. Мы очень готовы вас удивить еще раз.

1209 SERIE



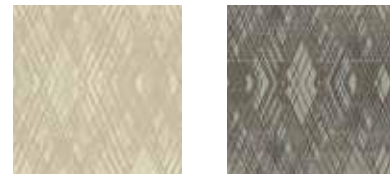
1207 SERIE



1211 SERIE



1213 SERIE



# OCTAGON

1.06 M X 10M / NON-WOVEN BACK  
PATTERNS



TR OCTAGON DESEN / RENK : 15/66  
EN OCTAGON PATTERN / COLOUR : 15/66  
RU OCTAGON ДИЗАЙН / ЦВЕТ : 15/66



# SIGNATURE

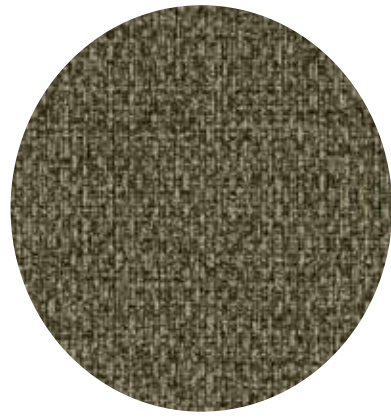
NON-WOVEN BACK  
1.06 M X 10M

TR Antika, renkli, büyük, zarif, cesur ve şık desenleri ile Signature, zarif tasarımı ile size bir Ortaçağ Avrupa ailesinin zarafetini ve lüksünü verecektir. Yumuşak doku ve hassas parlaklıktan lükslüğe kadar, eski duyguları kapsayacak, ılımlı ve kadınsı güzelliğini hissetmesini sağlayacaktır. Diğer şeylerin yanı sıra, tarihe ve geleneğe sadık bir markanın değerini dikkate alıyoruz. Ne kadar zaman geçerse geçsin değişmeyecek mücevherlerle bu kraliyet yeri ve klasik süsleme, hem duvarlar hem de sanatsal nesnelere, mekânınızın itibarını arttıracaktır.

EN Signature with antique, colorful, grand, yet elegant, bold, and stylish patterns. A delicate design can give you the elegance and luxury of a medieval European imperial family. From soft texture and delicate luster to luxuriousness, it can cover old sentiments, allowing one to feel moderate and feminine beauty. We consider, among other things, the value of a brand that has been faithful to history and tradition. With jewels that won't change no matter how much time goes by. This royal place and classical ornament, both walls and artistic objects, it will improve the dignity of your space.

RU Узор с антикварными, красочными, грандиозными, но элегантными, смелыми и стильными узорами. Тонкий дизайн может дать вам элегантность и роскошь средневековой европейской императорской семьи. От мягкой текстуры и нежного блеска до роскошности - он может охватывать старые чувства, позволяя почувствовать умеренную и женскую красоту. Мы учитываем, среди прочего, ценность бренда, который был верен истории и традициям. С драгоценностями, которые не изменятся, сколько бы времени не прошло. Это королевское место и классический орнамент, как стен, так и художественных предметов, он улучшит достоинства вашего пространства.

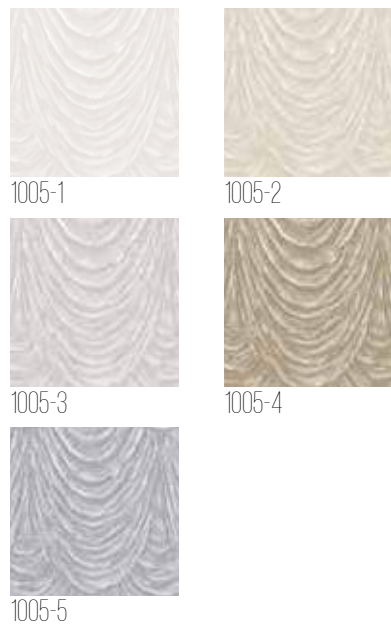
1014 SERIE



1002 SERIE



1005 SERIE



1006 SERIE



# SIGNATURE

1.06 M X 10M / NON-WOVEN BACK  
PATTERNS



TR SIGNATURE DESEN / RENK : 14/67  
EN SIGNATURE PATTERN / COLOUR : 14/67  
RU SIGNATURE ДИЗАЙН / ЦВЕТ : 14/67



# TROPICANO

PAPER BACK

1.06M X 15.6M

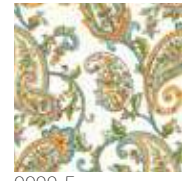
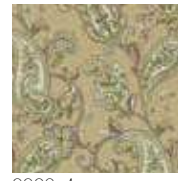
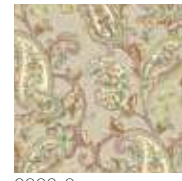
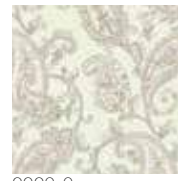
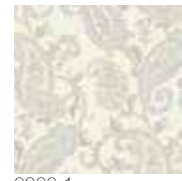
TR *Tropikal iklimin tutkulu yansımalarını kataloğumuzun sayfalarında göreceksiniz; yağmur ormanlarında seyahat ediyormuş gibi hissedecek ve yaşam alanlarınızı en kısa zamanda taşımak isteyeceksiniz. Tropicano koleksiyonumuz, mavi ve yeşilin canlandırıcı tonlarını, doğadaki dağ-kayaların tropik iklimler ve özgürlüklerini kanatlarında taşıyan güzel renkli kuşlara ev sahipliği yapan, göz alıcı hayvanları tanımlayan coğrafi dokulara sahip, barış yapılarıyla yükselen orman ağaçlarını içerir. Yeni koleksiyonumuzun, taşıdığı enerjiyi somut olarak hissedeceğimiz bir havası var.*

EN *You will see the passionate reflections of tropical climate on the pages of our catalogue, where you will feel like you are travelling through a rainforest, and you will want to move your living spaces as immediately as possible. Our Tropicano collection includes the refreshing shades of blue and green, the modernized rainbow colors, trees of forests rising with peace, structures with geographical textures that mountains-rocks, that is, nature identifies itself, the eye-catching animals that are hosted by tropical climates, and the beautiful coloured birds that carry the freedom in their wings. Our new collection has such an aura that you will feel the energy it carries in concretely.*

RU *Вы увидите страстные отражения тропического климата на страницах нашего каталога, где вы почувствуете, что путешествуете по тропическому лесу, и вам захочется как можно скорее переместить свои жилые помещения туда. Наша коллекция Tropicano включает в себя освежающие оттенки синего и зеленого, модернизированные цвета радуги, деревья лесов, растущих с миром, структуры с географическими текстурами, горы-скалы, то есть природа идентифицирует себя, привлекательных животных, которые живут в тропическом климате, и красивые цветные птицы, несущие свободу на своих крыльях. Наша новая коллекция обладает такой аурой, что вы почувствуете энергию, которую она несет.*



9903 SERIE



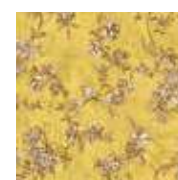
9909 SERIE



9907 SERIE



9914 SERIE



# TROPICANO

1.06M X 15.6M / PAPER BACK  
PATTERNS



9901-1



9901-2



9901-3



9901-4



9902-1



9902-2



9902-3



9902-4



9903-1



9903-2



9903-3



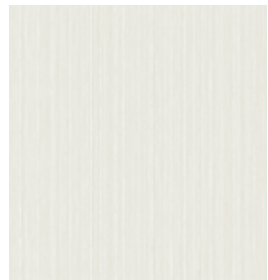
9903-4



9903-5



9904-1



9904-2



9904-3



9904-4



9904-5



9905-1



9905-2



9905-3



9905-4



9906-1



9906-2



9906-3



9906-4



9907-1



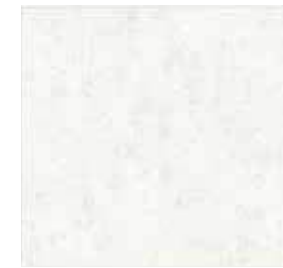
9907-2



9907-3



9907-4



9908-1



9908-2



9908-3



9908-4



9908-5



9909-1



9909-2



9909-3



9909-4



9909-5



9910-1



9910-2



9910-3



9910-4



9910-5



9911-1



9911-2



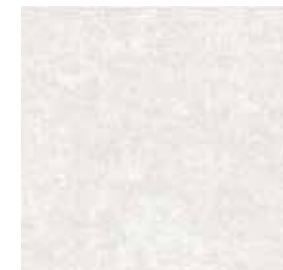
9911-3



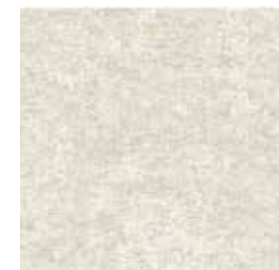
9911-4



9911-5



9912-1



9912-2



9912-3



9912-4



9912-5



9912-6



9913-1



9913-2



9913-3



9913-4



9913-5



9914-1



9914-2



9914-3



9914-4

TR TROPICANO DESEN / RENK : 14/65  
EN TROPICANO PATTERN / COLOUR : 14/65  
RU TROPICANO ДИЗАЙН / ЦВЕТ : 14/65



# ADAKIDS

## NON-WOVEN BACK

### 1.06M X 10M

TR Küçük çocuklar hayal eder. Daha büyük olmayı hayal eder. Kahraman olmayı hayal eder. İster DC Süper Kahramanlar, isterse sevilen animasyon karakterleri olsun, bu efsanevi karakterler hayal gücünü bir çocuğun dünyasına uyacak şekilde yakalar ve teşvik eder. Bu anında tanınabilir ve istek uyandıran karakterler, çocukların sadece süper kahramanlar gibi değil, aynı zamanda süper kahramanlar gibi rol oynamalarına da izin verir: Batman ve Süpermen, Tom ve Jerry, dostluk temalarını pekiştirir, aynı zamanda kardeş bir rekabeti yansıtır arkadaşların en iyisidir, aynı zamanda en iyi düşman! Looney Tunes, bir çocuğun hayatına yüksek enerjili mizah ve eğlence getiriyor. Çocuklar bu karakterleri televizyon aracılığıyla, ebeveynleriyle alışveriş yaparak ve çoğunlukla oyuncak ve giyim sektöründe tanır. ADAKIDS, duvar kağıtlarımız biçiminde, bu karakterleri çocuklar için kendi yatak odalarında hayata geçiriyor.

EN Little children dream. They dream of being bigger. They dream of being a hero. Whether it's the DC Super Heroes or the well-loved animation characters, these legendary characters capture and stimulate the imaginations in a way that fits into a child's world. These instantly recognizable and aspirational characters allow kids to role play, not just as any super heroes but as the ultimate super heroes: Batman and Superman, Tom and Jerry reinforce the themes of friendship yet reflect a sibling rivalry the best of friends but also the best enemies! The Looney Toones bring high-energy humour and fun to a child's life. Children know these characters through television, shopping with their parents and mostly in the toy and clothing sector. ADAKIDS brings these characters to life for children in their own bedrooms in the form of our wallpapers.

RU Маленькие дети мечтают. Они мечтают стать взрослыми. Они мечтают стать героями. Будь-то супергерои DC или любимые анимационные персонажи, эти легендарные персонажи захватывают и стимулируют воображение таким образом, что вписываются в мир ребенка. Эти, мгновенно узнаваемые, и вдохновляющие персонажи, позволяют детям играть в ролевые игры не просто как супергерои, а как настоящие герои. Супергерои: Бэтмен и Супермен, Том и Джерри усиливают темы дружбы, но отражают соперничество между братьями и сестрами - лучшие друзья, но и лучшие соперники! The Looney Tunes привносят высокую энергию юмора и веселье в жизнь ребенка. Дети знают этих персонажей из телевизора, шоппинга с родителями и, в основном, из сферы игрушек и одежды. ADAKIDS воплощает в жизнь эти символы для детей в собственных спальнях в виде наших обоев.

8917 SERIE



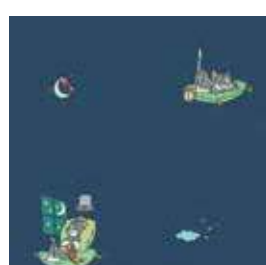
8917-1



8917-2



8941-1



8941-2

8941 SERIE



8922 SERIE



8922-1



8922-2



8929-1



8929-2

8929 SERIE



# ADAKIDS

## 1.06M X 10M / NON-WOVEN BACK PATTERNS



TR ADAKIDS DESEN / RENK : 44/91  
 EN ADAKIDS PATTERN / COLOUR : 44/91  
 RU ADAKIDS ДИЗАЙН / ЦВЕТ : 44/91



# SEVEN

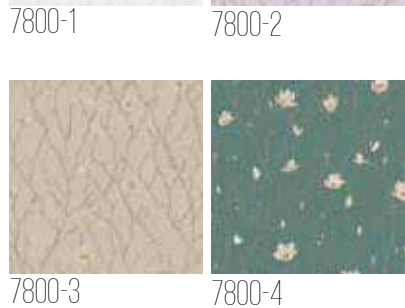
NON-WOVEN BACK  
1.06M X 10M OR 1.06M X 15.6M

**TR** Hepimiz sayılara ve kullanım yönlerine oldukça aşinayız, fakat sürekli dilimizde olmalarına rağmen derinliklerini sorgulama ihtiyacı duymuyoruz. Denizlerin figüratif sayısı yedidir, Büyükayı yedi yıldızlıdır, yer ve gök yedi kattan oluşur, insan yedi çakralıdır... Birbirinden farklı din ve kültürlerde ise: İslam dinine göre kâinat yedi safhada yaratıldı. Katoliklerde yedi sakrament esastır, Yahudilerde kutsal şamdan yedi mumludur, mitolojide yedi esas Tanrı vardır, Mısır'da Güneş Tanrısı Ra yedi ruhludur, Tibet'te yedi Buda vardır, Çin'de kutsal yedi element vardır... Son olarak, yedi sayısını insan tarafından düzenleyici ve belirleyici bir rakam olarak da sık sık görmekteyiz. Örneğin; bir hafta yedi gündür, feng shuide iletişim sayısı yedidir, Kızılderililere göre yedi mevsim vardır ve tüm Japonlarda rakamların en uğurlusu yedidir... AdaWall'da yedi sayısından yola çıkarak yedinci kataloğuna verdiği "Seven" ismiyle, duvar kağıtlarının, desenlerinin birçok anlam taşımasının farkındalığını yaratmayı amaçladı. Tıpkı yedinin sadece bir rakamdan ibaret olmadığı gibi...

**EN** We are all very familiar with the numbers and their areas of usage, but we do not need to question their profundity, even though they are always in our language. The figurative number of the seas is seven, the great bear has seven stars, the earth and the sky have seven layers, the human has seven chakras... In different religions and cultures, for instance, according to the Islamic religion, the universe was created in seven stages. The Catholics recognize seven sacraments, Jews' sacred candelabrum has seven candles, there are seven essential gods in mythology, the Egyptian sun god Ra has seven souls, there are seven Buddhas in Tibet, there are seven sacred elements in China... Finally, we often see the number seven as a regulatory and decisive figure by human. For instance; there are seven days in a week, Feng Shui's contact number is seven, there are seven seasons for the Indians, and the luckiest number for Japans is seven... AdaWall also aimed to create awareness of the many meanings of the wallpapers, patterns, with the name of Seven for its seventh catalogue. Just as Seven is not just a number...

**RU** Мы все хорошо знакомы с цифрами, числами и правилами счёта, а также с их использованием. Но мы никогда не задумываемся над их значениями, хотя они каждый день у нас на языке. У Большой Медведицы семь звезд, у земли и неба семь уровней. В разных культурах и религиях, например согласно исламской, Вселенная была создана в семь этапов. У католиков есть семь таинственных монастырей. У иудеев - семь священных подсвечников, в мифологии есть семь главных богов. В Египте у Бога Солнца Ра - есть семь душ. В Тибете - есть семь Будд. В Китае есть семь священных элементов. Наконец, мы часто рассматриваем число 7 как нормативную и решающую фигуру. Например, семь дней в неделе. Есть семь сезонов в соответствии с индейцами. И самый удачный номер для Японии - семь. AdaWall использовал в названии седьмого каталога цифру семь, чтобы создать осведомленность о множественном значении дизайна, чтобы подчеркнуть, что семь не просто число.

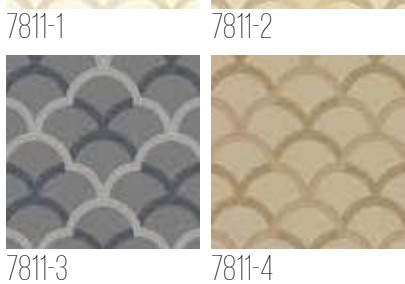
7800 SERIE



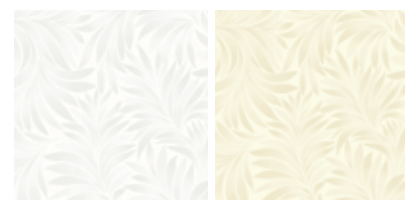
7807 SERIE



7811 SERIE



7812 SERIE



# SEVEN

1.06M X 10M OR 1.06M X 15.6M / NON-WOVEN BACK  
PATTERNS



TR SEVEN DESEN / RENK : 20/89  
EN SEVEN PATTERN / COLOUR : 20/89  
RU SEVEN ДИЗАЙН / ЦВЕТ : 20/89



# BETA

## NON-WOVEN BACK

### 1.06M X 10M OR 1.06M X 15.6M

TR “Less is more”... Ludwig Mies van der Rohe isimli mimarın modernizm ile beraber popülerlik kazanan ve evrensel şekilde benimsenmeye hızla devam eden bu tabiri, “Beta” koleksiyonunun oluşum sürecinde bizi besleyen anahtar bir motto oldu. “Az olan daha fazladır.”, “Az ve öz.” gibi manalar ifade eden bu söylem, abartılı detaylardan arındırılmış sade ve akıcı bir tasarımı; gösterişli bir tasarımdan çok daha güçlü olabileceği iddiasını ortaya koymaktadır. İlk duyduğunuzda kulağa fazla cesur gelen bu yaklaşımı, yeni koleksiyonumuz “Beta”yı inceledikten sonra tekrar değerlendirmenizi öneririz! Minimalist tasarımda çığır açacak olan yeni koleksiyonumuz, modern sanatın çarpıcı sadeliğini ve sofistike zarafetin göz alıcı derinliğini kanıtlar niteliktedir. “Alfa” koleksiyonunun devamı özelliğinde olan ve ikinci cilt olarak tasarılan “Beta”, AdaWall’un zirvedeki yerini sağlamlaştırarak çok özel bir tasarım serisini sizlere sunmaktadır. Geometrik şekillerin inceliklerle harmanlandığı konformist modelleri, soyut geçişler ile kompozisyon edilmiş ilham verici ikonik desenleri içeriğinde bulunduran “Beta” sizler için unutulması imkansız bir dizi deneyim olacak...

EN “Less is more”... That interpretation belongs to Ludwig Mies van der Rohe which is getting popularity and continuing to be embraced worldwide rapidly, was also a key motto for us because it impressed our designers in the process of creating “Beta” collection. His words mean some expressions such as “When it becomes less it seems like more.” or “concisely” that asserts when a modest and smooth design is pruned from exaggerated details, it becomes stronger than a flashy design. When this approach is heard for the first time, it may sound very assertive, but we suggest you to evaluate it again after you see our new collection “Beta”! “Beta” collection which will break a new ground on the minimalist design is somehow a proof for striking simplicity of modern art and glamorous deepness of sophisticated elegance. “Beta” is designed as the second vol of Alfa collection series that consolidates AdaWalls’ position at the peak by offering you a very special design series. The collection consists of conformist models that geometric shapes are blended gracefully and iconic patterns are composed with abstract transition figures will become a unforgettable experience sequence for our customers.

RU “Меньше значит больше”... Эта трактовка, принадлежащая Людвигу Мис ван дер Роэ и, которая продолжает набирать популярность и быстро охватывать весь мир, стала ключевым девизом для нас, потому что произвела впечатление на наших дизайнеров в процессе создания коллекции “BETA”. Эти слова означают некоторые выражения, такие как “когда становится меньше, кажется, что больше” или “лаконично”. Они утверждают, что скромный и гладкий дизайн, очищенный от преувеличенных деталей, сильнее, чем кричащий и вызывающий дизайн. Когда это выражение слышится впервые, оно может звучать очень агрессивно, но мы предлагаем вам оценить его еще раз после того, как вы увидите нашу новую коллекцию “BETA”! “BETA” коллекция создает новую почву для минималистского дизайна и, в некотором роде, является доказательством поразительной простоты современного искусства и гламурной глубины утонченной элегантности. Коллекция “BETA”, разработанная как второй том серии коллекции “Alfa”, укрепляет позиции AdaWalls на пике популярности, предлагая вам совершенно особенную дизайнерскую серию. Коллекция, состоящая из конформистских моделей, которые изящно сочетают геометрические фигуры и знаковые абстрактные, переходные фигуры, станет незабываемой последовательностью впечатлений для наших клиентов.

1102 SERIE



1108 SERIE



1107 SERIE



1109 SERIE



# BETA

1.06M X 10M OR 1.06M X 15.6M / NON-WOVEN BACK  
PATTERNS



TR BETA DESEN / RENK  
EN BETA PATTERN / COLOUR  
RU BETA ДИЗАЙН / ЦВЕТ

: 13/83  
: 13/83  
: 13/83



# RUMI

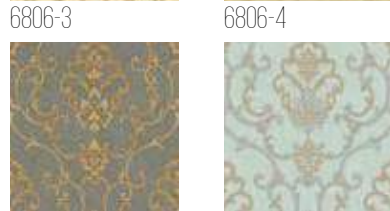
NON-WOVEN BACK  
1.06M X 10M

TR Kısacık bir kelime ne kadar derin olabilirse o kadar derin; “Rumi”... Tam adıyla Mevlana Celaleddin Rumi... O sonsuzluğun ta kendisi. “Rumi”, ömrünü sevgiyi ve hoşgörüyü yaymak için geçirmiş evrensel bir elçidir. Söyledikleri sadece Müslümanlar ya da Allah’a inananlar için değildir; O, herkese aynı şekilde kucak açmıştır. O yüzden herkes tarafından sevilmiştir. Hep “aşk” demmiştir, fakat kastettiği aşk, insana duyulan değil, ilahi olan aşktır. O nedenledir ki, yaşadığı sürece dilinden aşk ve özlem hiç düşmemiştir. “Rumi” isimli katalogda, tasavvuf ve mesnevi esintileriyle özgünleştirilmiş desenlere, hoşgörü ve sevgi yumuşaklığında ruh okşayan renklere ve Anadolu’dan izler taşıyan dokulara rastlayacak, sizde uyandırdığı hissi çok seveceksiniz. Katalogumuzda 4 tema vardır; Klasik, Mesnevi, Osmanlı, Saray.

EN The shortest word as deep as can be: “Rumi” By full name Mevlana Celaleddin Rumi. Who lived in the 13th century in Anatolia. “Rumi” was an ambassador who spent his life to spread love and tolerance. It’s very difficult to tell about him in certain words because he is the one means infinity. He is the most unique and the biggest name that is correlated with the words Sufism and Masnavi. Rumi collection includes 4 themes: Classic, Masnavi, Ottoman, Palace.

RU Такое короткое слово может иметь очень глубокое значение. Руми... Полное имя Мевляна Джелалеттин Руми. Его сложно описать привычными нам формами, потому что Он -это вечность. Невозможно не попасть под Его влияние, не вдохновиться Его философией и взглядом на жизнь. Вы полюбите то чувство, которое пробудит в вас каталог “Руми”: благодаря цветам, так тепло согревающим взгляд, узорам, передающим всю глубину суфизма, и текстурам, почерпнутым из Анатолийской истории. В этом каталоге 4 темы: Classic, Masnavi, Ottoman, Palace.

6806 SERIE



6806-1

6806-2

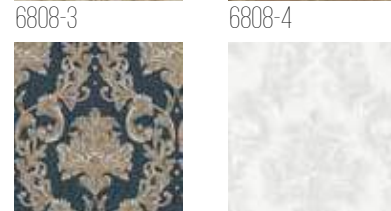
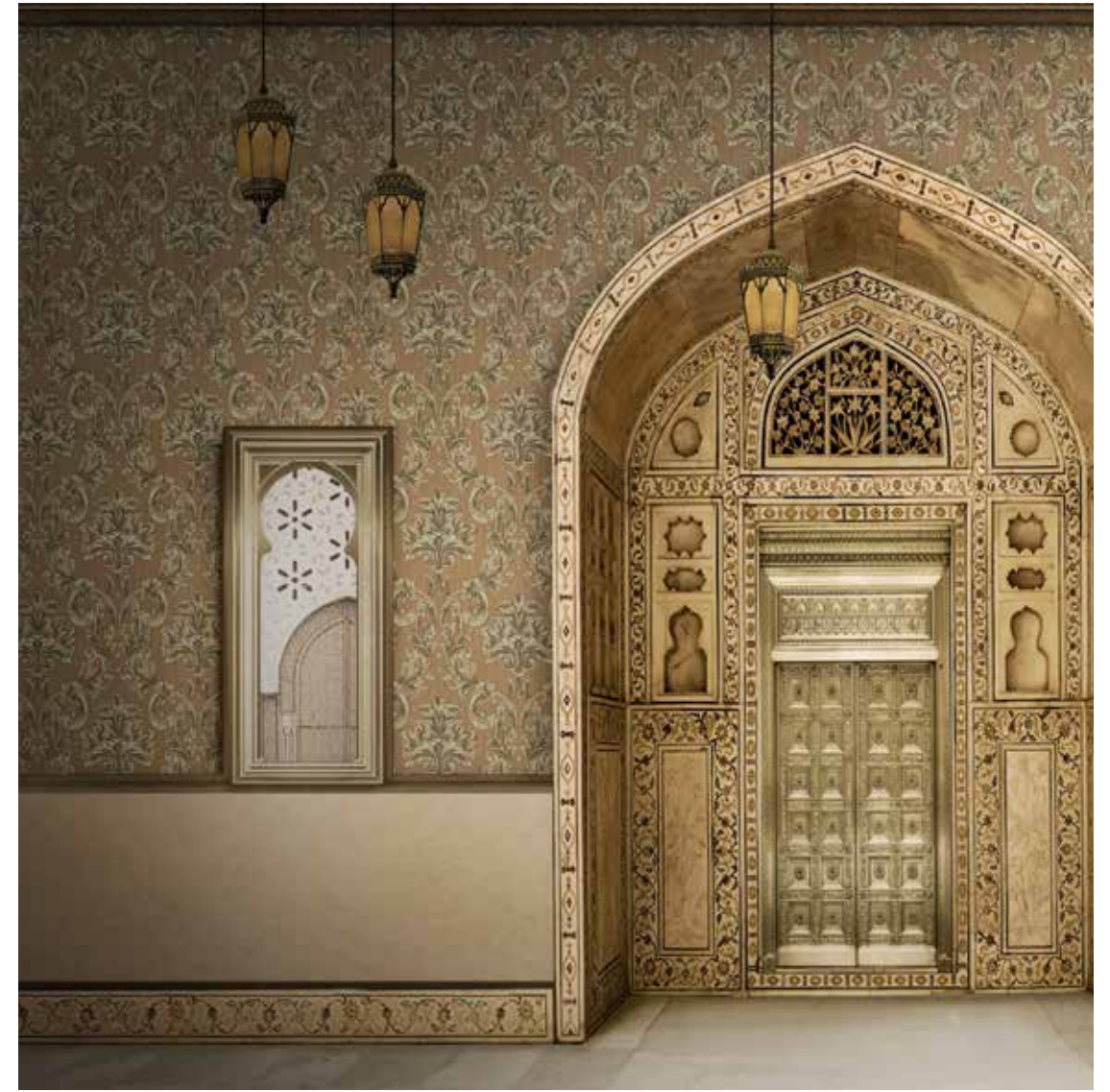
6806-3

6806-4

6806-5

6806-6

6808 SERIE



6808-1

6808-2

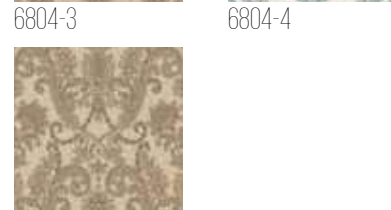
6808-3

6808-4

6808-5

6808-6

6804 SERIE



6804-1

6804-2

6804-3

6804-4

6804-5

6805 SERIE



6805-1

6805-2

6805-3

6805-4

6805-5

6805-6

# RUMI

1.06M X 10M / NON-WOVEN BACK  
PATTERNS



6801-1



6801-2



6801-3



6801-4



6801-5



6801-6



6801-7



6801-8



6802-1



6802-2



6802-3



6802-4



6802-5



6803-1



6803-2



6803-3



6803-4



6803-5



6804-1



6804-2



6804-3



6804-4



6804-5



6805-1



6805-2



6805-3



6805-4



6805-5



6805-6



6806-1



6806-2



6806-3



6806-4



6806-5



6806-6



6807-1



6807-2



6807-3



6807-4



6807-5



6807-6



6808-1



6808-2



6808-3



6808-4



6808-5



6808-6

POSTER/MURAL/ФОТОБОЙ



6660-3/9

TR RUMI DESEN / RENK : 9/48  
EN RUMI PATTERN / COLOUR : 9/48  
RU RUMI ДИЗАЙН / ЦВЕТ : 9/48



# KALINKA

NON-WOVEN BACK

1.06M X 10M

TR “Kalinka” Rusya’nın ve Rus sanatının sembollerinden biri olarak kabul gören, Rusya’nın tüm dünyaca bilinen en popüler şarkılarından biridir. Rusça bilmeyenler genelde bu ismi bir kadın adıyla bağdaştırmaktadır. Oysa sanılanın aksine; “Kalinka” Rusya’da büyüyen küçük bir ağaç anlamına gelmektedir. Sözlerinden, bir kadına “benim ağacım, benim uğurböceğim, böğürtlenim” gibi naif yaklaşımlarda bulunularak onun tarafından sevilmenin arzulandığını anlayabiliyoruz. “Kalinka”, Rus kültür ve zevki, goblen tarzı ve dokusu bütünüyle karşımıza çıkmaktadır. İğne iplikle kumaşa işlenmiş resimler kadar göz alıcı ve halı kilim dokumalarındaki özen kadar etkileyici bir havaya sahip... Bu kataloğumuzda da farklılık yaratmayı amaçlayıp hareketli, bir o kadar da derin izler taşıyan desenler seçtik sizin için... Kataloğumuzda 4 tema vardır; Çiçek, Dantel, Goblen, Sovyet Retro.

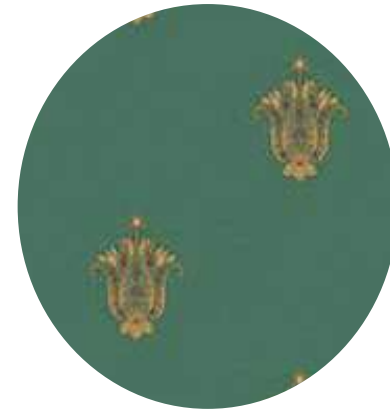
EN Every beautiful formation has a different nativity story. This catalogue is from those who have that story... “Kalinka” is considered one of the symbols of Russian art. For this reason, when some hear about “Kalinka” they remind the rhythm of the song that starts slowly and gradually becomes faster and cheerful dance figures. The song “Kalinka” inspired catalogue, the style and texture of tapestry with traces of Russian culture and taste it is antagonistic. The needlework is so eye-catching and carpet rugs you will be very pleased with the papers in this catalogue, which have as impressive air as the care of your fabrics. This catalogue has 4 themes: Flower, Ruche, Gobelin, Soviet Retro.

RU Калинка. У всего на Земле есть своя история рождения. Как и у этого каталога... Калинка, будучи известной на весь мир песней, является одним из символов русского искусства. Первое, что приходит на ум, когда люди слышат это название, - это медленное начало и затем все ускоряющийся темп песни и танца. Наш каталог, вдохновленный песней “Калинка”, представляет вам все разнообразие рисунков и фактур, как, например, goblen, несущих в себе следы русской культуры и истории. Приковывающие внимание, как картины, расшитые шелковыми нитями, и невероятные на ощупь, как ковры, сотканые вручную, так наши обои поразят вас в самое сердце. В каталоге представлены 4 темы: Flower, Ruche, Gobelin, Soviet Retro.

5806 SERIE



5807 SERIE



5809 SERIE



5802 SERIE





# KALINKA

1.06M X 10M / NON-WOVEN BACK

## PATTERNS



5801-1



5801-2



5801-3



5801-4



5801-5



5801-6



5801-7



5801-8



5801-9



5802-1



5802-2



5802-3



5802-4



5802-5



5803-1



5803-2



5803-3



5803-4



5803-5



5803-6



5804-1



5804-2



5804-3



5804-4



5804-5



5804-6



5805-1



5805-2



5805-3



5805-4



5805-5



5806-1



5806-2



5806-3



5806-4



5806-5



5806-6



5807-1



5807-2



5807-3



5807-4



5807-5



5808-1



5808-2



5808-3



5808-4



5808-5



5809-1



5809-2



5809-3



5809-4



5809-5

TR KALINKA DESEN / RENK : 9/52  
 EN KALINKA PATTERN / COLOUR : 9/52  
 RU KALINKA ДИЗАЙН / ЦВЕТ : 9/52



# INDIGO

NON-WOVEN BACK  
1.06M X 10M

**TR** İndigo; mavi ve siyahın arasında bir yerlerde bulunan bir renk tonunu ifade eder. Bu yüzden İndigo'nun kendisine has bir renk derinliği vardır, bu onu mistik ve mucizevi kılar. O, denizlerin derinliklerinden bulunan ışığa, yıldızların ışıltılı parladığı gökyüzüne ve sık ağaçlarla kaplı bir ormana benzer. Biz de bu kataloğumuzu, modern desenlerle birlikte geometrik şekillere, ilgi çekici poster modellerine, aynı zamanda doğadan aldığı tropik, mermer ve benzeri tazeleyici etki yaratan doğa temalı dokulara sahip olarak tasarladık. Kataloğumuzda 4 tema vardır. Tropikal, Mermer, Yazı, Şal.

**EN** Indigo is not an ordinary colour. It resembles a light from the depths of the sea, a sky where stars shine bright, and a forest covered with dense trees. Therefore, indigo has its own unique colour depth, which makes it mystical and miraculous. AdaWall signed catalogue has geometric shapes with modern designs, interesting poster models, and also nature-related textures that create tropical marble and so on. This catalogue has 4 themes: Tropical, Marble, Typo, Wrap.

**RU** Индиго - это необычный цвет. Он похож на свет из глубин моря, небо, где ярко светят звезды, и лес, покрытый густыми деревьями. Индиго имеет свою уникальную глубину цвета, что делает его мистическим и чудесным. Данный каталог компании AdaWall содержит разные по теме дизайны: начиная с современных с геометрическими формами, передающие природные мотивы, такие как мрамор, а также разнообразные модели постеров. В этом каталоге представлены 4 темы: Tropical, Marble, Typo, Wrap.

4705 SERIE



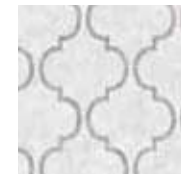
4705-1



4705-2



4705-3



4703-1



4703-2



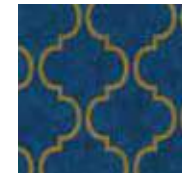
4703-3



4703-4



4703-5



4703-6



4703 SERIE

4711 SERIE



4711-1



4711-2



4711-3



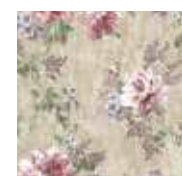
4708-1



4708-2



4708-3



4708-4



4708 SERIE

# INDIGO

1.06 M X 10 M / NON-WOVEN BACK  
PATTERNS



TR INDIGO DESEN / RENK : 19/77  
EN INDIGO PATTERN / COLOUR : 19/77  
RU INDIGO ДИЗАЙН / ЦВЕТ : 19/77



# ALFA

PAPER BACK

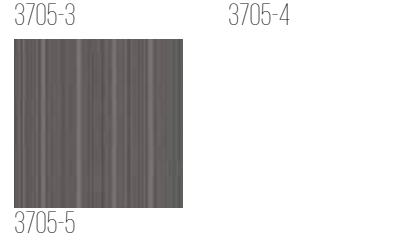
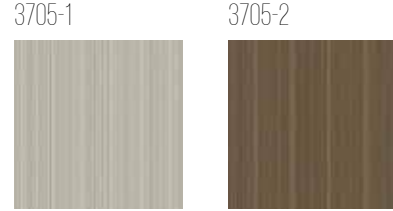
1.06M X 15.6M

**TR** Alfa insan biliminde; erkeklerin ekip olarak sorunsuz çalışabilmesi için aralarında belirledikleri ve kabul ettikleri lider pozisyonundaki kişi Alfa kelimesiyle adlandırılıyor. Lider... Erkek, sakin, kararlı, kendine güvenen, belki düz, belki biraz derin... Yalnız, asla şaşalı, karışık ya da dağınık değil; çünkü liderler, kendini göstermek ya da kanıtlamak için uçlarda davranmazlar, onların kendilerine özgü bir havaları vardır. Biz de bu katalogda bir lider benimsedik kendimize. Katalogumuzdaki desenler için iddiamızı sadelikte ve derinlikte sakladık. Katalogumuzda 7 tema vardır; Balıksırtı, Yaratıcılık, Beton, Sade, Modern, Tahta, Hasır.

**EN** Alfa, according to the human history, is a man, who set out to be able to work as a team without any problems and the person in the leading position they accepted was again called Alfa. Leader... Male, calm, determined, confident, maybe flat, perhaps a little deep... However, never hesitant, not mixed or scattered; because leaders are at the tip to show or prove themselves they do not behave, they have their own air. Also, their self-confidence is quiet, simple. It is significant. Sometimes, for them to be assertive, the word is hidden in the depth of the simplicity. Here we are when we designed our catalogue, we brought such a leader before our eyes. This catalogue has 7 themes: Herringbone, Creativity, Concrete, Plain, Modern, Wood, Wicker.

**RU** Альфа - если взглянуть на историю человечества - это человек, который избирался и утверждался на позицию лидера в группе мужчин для их беспроблемной работы в команде. Лидер - мужчина, спокойный, решительный, уверенный в себе, возможно слишком прямолинейный, глубокий. Однако, никогда он не будет нерешительным, неуверенным или неупорядоченным, потому что лидеры не бросаются в крайности, чтобы показать себя или что-либо доказать; они сами устанавливают правила. Помимо этого их... уверенность в себе тиха, спокойна, но несет глубокий смысл. И даже иногда вся суть их уверенности спрятана в простоте, кажущейся такой на первый взгляд. Наша команда, создавая этот каталог, представляла себе именно такого лидера. В этом каталоге 7 тем: Herringbone, Creativity, Concrete, Plain, Modern, Wood, Wicker.

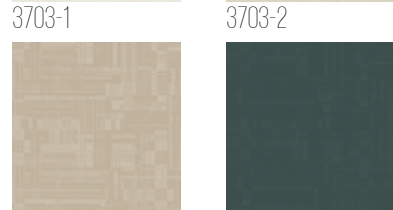
3705 SERIE



3708 SERIE



3703 SERIE



3714 SERIE



# ALFA

1.06M X 15.6M / PAPER BACK  
PATTERNS



TR ALFA DESEN / RENK : 18/102  
 EN ALFA PATTERN / COLOUR : 18/102  
 RU ALFA ДИЗАЙН / ЦВЕТ : 18/102



# ANKA

PAPER BACK

1.06M X 15.6M

**TR** Efsanelere konu olmuş, üzerine olağüstü betimlemeler yapılmış, kuşların hükümdarı, hastalıkların devası ve bilgi dehası ANKA... Alev alev kanatlarıyla havada süzülen görkemli bir ateş sanki! Anka'ya ulaşmak isteyen kuşların, Kaf Dağındaki zorlu engelleri aşmaları gerekiyormuş... Yolculuğun sonunda sadece otuz kuş (Si: Otuz, Murg: Kuş) Kaf Dağına ulaşabilmiş. Kuşlar Anka'yı Kaf Dağında bulamayınca bu yolculuğun kuşların hükümdarı Anka'ya değil de, kendilerine yaptıkları bir iç yolculuk olduğunu fark etmişler. Kendi aleviyle kendisini yakıp yeniden doğabilen Anka gibi AdaWall da ana firmamızdan Ateş'in Öz'ünden doğdu. Böylece ilk kataloğumuz Anka'nın hikayesini AdaWall'un amacıyla özdeşleştirdik. Kataloğumuzda 4 tema vardır: Tahta, Taş, Yaratıcı, Geometrik.

**EN** Anka is a bird which takes place in legends and extraordinary portrayal. It is different from others in the same kind; Anka is the sovereign of the other birds. It is able to burn itself with its flame and reborn itself on its own again. Is it possible not to wonder about such a bird, while there are many things about it to be mentioned? Under this circumstance, all bird species start to wonder about it and decide to reach Anka. On this journey, the birds which are weak and tired can't continue. Consequently, only thirty birds (si: thirty murg: bird) remain and perform the success of reaching Anka. On the other hand, the ones that arrive can't find Anka and understand it was an inner journey which they made to find themselves. There are reasons why we found "Anka" very meaningful as a first catalogue name. We identify Anka with our newly established wallpaper facility, the purpose of this facility and our company story. To begin with, AdaWall is born out of -metaphorically from its ashes- its main company Öz Ateş which can be translated as the core of fire in English. Just the same way as Anka's rebirth. Anka Collection includes 4 themes: Wood, Stone, Creative, Geometric.

**RU** Анка. Наша компания родилась из огня нашей материнской компании (Oz Ates - огонь), как птица Анка, которая рождается из огня. Как птицы, которые хотят добраться до Анки, так и фабрика AdaWall, начиная свой путь с импорта обоев, и, получив достаточные знания и опыт, приступила к их производству. Для первого каталога фабрики AdaWall, который оставил заметный след в секторе производства обоев, мы выбрали имя Анка, вдохновившись историей возникновения нашей фабрики. В этом каталоге представлены 4 темы: Wood, Stone, Creative, Geometric.



1604 SERIE



1604-1



1604-2



1604-3



1611-1



1611-2



1611-3

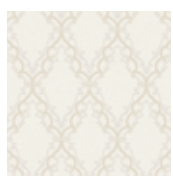


1611-4

1611 SERIE



1610 SERIE



1610-1



1610-2



1610-3



1606-1



1606-2



1606-3



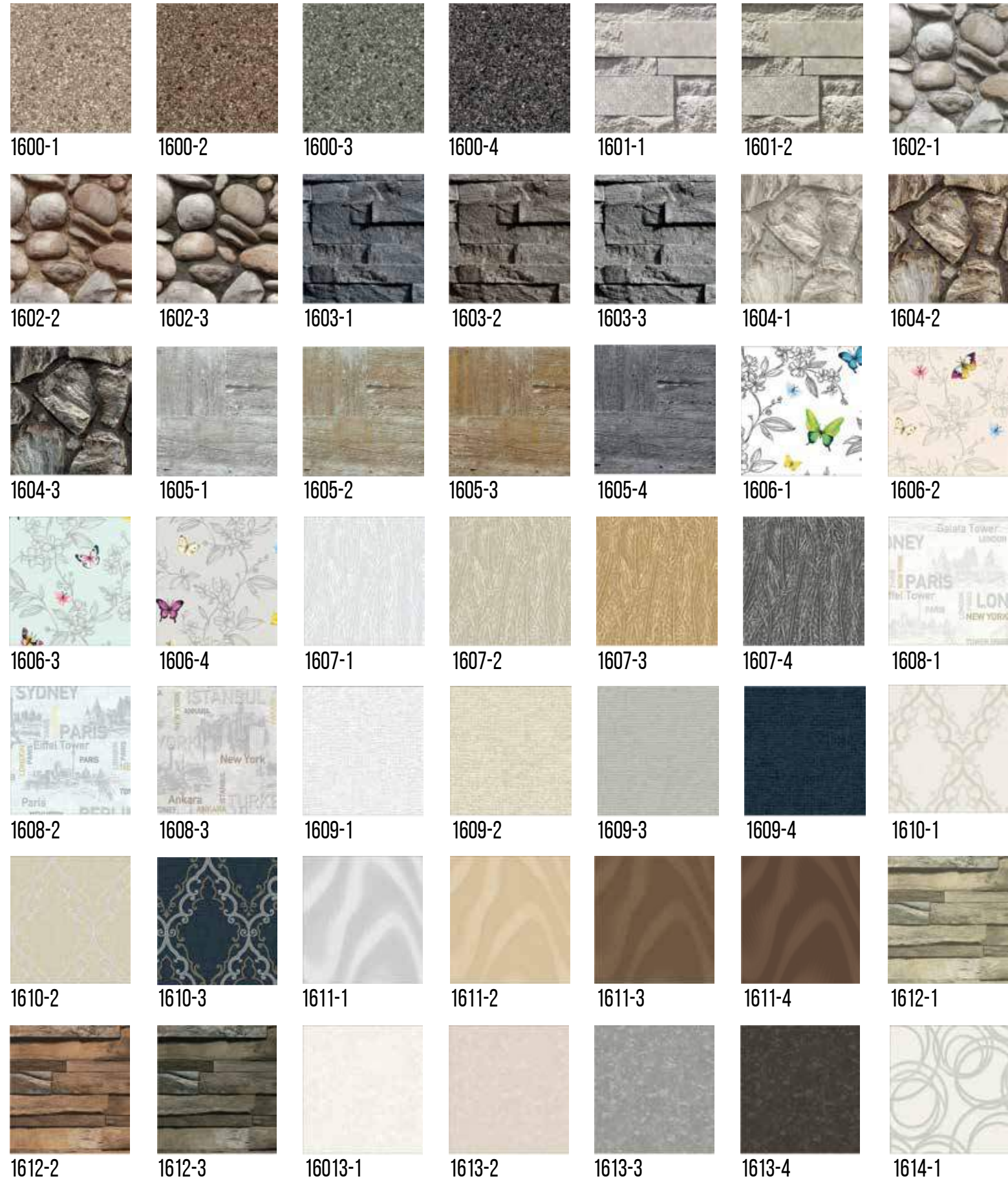
1606-4

1606 SERIE



# ANKA

## 1.06M X 15.6M / PAPER BACK PATTERNS



TR ANKA DESEN / RENK : 24/96  
 EN ANKA PATTERN / COLOUR : 24/96  
 RU ANKA ДИЗАЙН / ЦВЕТ : 24/96



FJ307-3

# FIJI

NON-WOVEN BACK  
POSTER/MURAL/ФОТООБОИ

**TR** Gözlerinizi kapatın ve kendinizi tropik bir adada hissedin. Şehir hayatından kaçmak ve sıcak güneşi hissedip okyanus kokusunu ciğerlerinize doldurmak harika olmaz mıydı? Adawall, yeni poster katalou Fiji ile bu hayalinizi gerçeğe dönüştürmeyi amaçlıyor. Güney Pasifik'te saklı bir cennet olarak kabul edilen Fiji Adaları'nın acele hayattan uzak, dingin ve geleneksel tasarımlarını modern dokunuşlar ile harmanlayarak duvarlarınıza yansıtmayı hedefledik. Ayrıca, benzersiz tasarımlarımızı ilk kez farklı arka plan seçenekleri ile beğeninize sunuyoruz. Standart seçenekle birlikte altın, gümüş ya da ince renkli arka planlar ile duvarlarınızı keyfinize göre kişiselleştirip çok daha farklı bir görünüm elde edebileceksiniz. Fiji koleksiyonu; keyifli yaşam alanları ile birçok farklı seçenek sunuyor. Soyut doğa manzaraları, tarihten esinlenen geleneksel görseller ya da hayal gücüyle şekillenen modern çizgiler...Seçim yapmak zor, ama her tasarım sizi yepyeni bir serüvene çıkarmak için hazır.

**EN** Close your eyes and picture yourself on a tropical island. Wouldn't it be great to escape the city life to feel the warm sun and fill your lungs with the smell of the ocean? Adawall aims to make this dream come true with its new mural collection Fiji. We aimed to reflect the serene and traditional design of a hidden paradise in the South Pacific to your walls by blending them with modern touches. Thus, you will be able to escape from the daily hustle and experience the calmness and peace in the comfort of your home or at your workplace every day. In addition, for the first time, we present our unique designs to your liking with different background printing options. Alongside with the standard options, you will be able to personalize your walls according to your taste with gold, silver or pearl backgrounds and get a much different look. Fiji collections; offers many different options for pleasant spaces. Abstract nature scenes, traditional visually inspired by history or modern lines shaped by imagination...It's hard to choose, but each design is ready to take you on a brand new adventure.

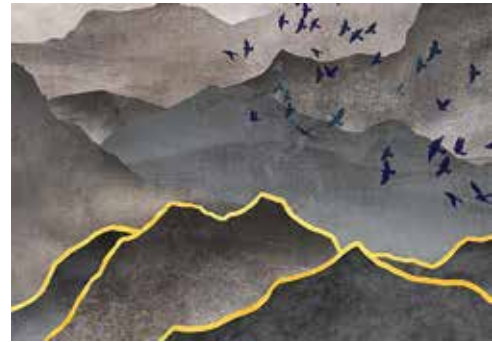
**RU** Закройте глаза и представьте себя на тропическом острове. Разве не было бы здорово сбежать от городской суеты, почувствовать теплое солнце и наполнить легкие запахом океана? Adawall стремится воплотить эту мечту в реальность с помощью своей новой коллекции постеров Fiji. Мы стремились отразить безмятежный и традиционный дизайн поистине райского места в южной части Тихого океана на ваших стенах, сочетая его с современными элементами. Таким образом, вы сможете отвлечься от повседневной суеты и каждый день ощущать спокойствие и умиротворение, не выходя из дома или даже на рабочем месте. Кроме того, впервые мы представляем наши уникальные дизайны по вашему вкусу с различными вариантами фоновой печати. Наряду со стандартными опциями Вы сможете персонализировать свои стены по своему вкусу с помощью золотого, серебряного или жемчужного фона и получить совершенный вид. Коллекция Fiji предлагает много разных вариантов для Вашего вдохновения. Абстрактные пейзажи природы, традиционные образы, вдохновленные историей, или современные линии, сформированные воображением ... Трудно выбрать, но с помощью каждого из этих дизайнов Вы можете с легкостью отправиться в новое приключение.



FJ317-2



FJ317-1



FJ317-2



FJ317-3



FJ307-1



FJ307-2



FJ307-3



FJ307-2



FJ300-3



FJ300-1



FJ300-2



FJ300-3



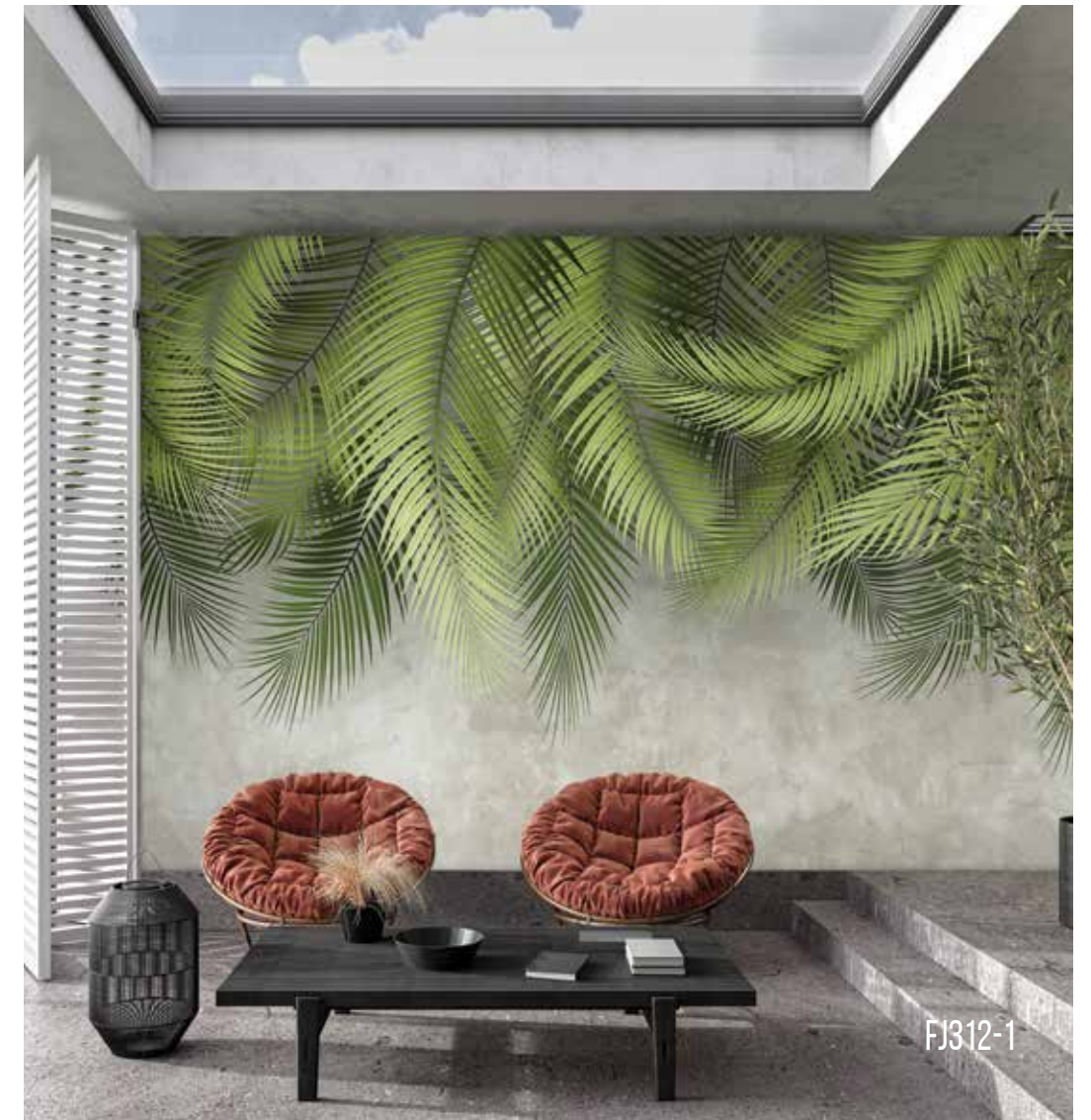
FJ312-1



FJ312-2



FJ312-3



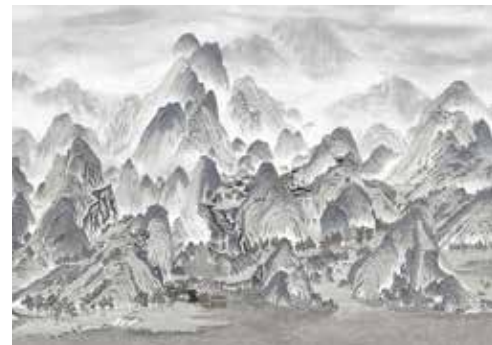
FJ312-1



FJ318-1



FJ318-1



FJ318-2



FJ318-3



FJ306-1



FJ306-2



FJ306-3



FJ306-2



FJ308-1



FJ308-1



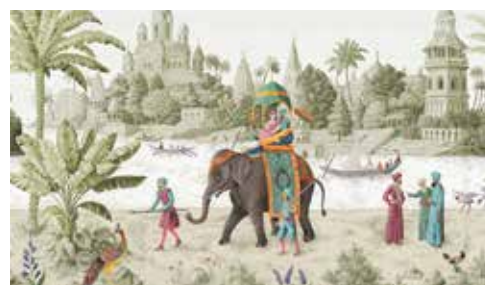
FJ308-2



FJ308-3



FJ309-1



FJ309-2



FJ309-3



FJ309-1

# FIJI MURAL

## NON-WOVEN BACK PATTERNS



FJ300-1



FJ300-2



FJ300-3



FJ301-1



FJ301-2



FJ302-1



FJ302-2



FJ302-3



FJ303-1



FJ303-2



FJ303-3



FJ304-1



FJ304-2



FJ304-3



FJ305-1



FJ305-2



FJ305-3



FJ306-1



FJ306-2



FJ306-3



FJ307-1



FJ307-2



FJ307-3



FJ308-1



FJ308-2



FJ308-3



FJ309-1



FJ309-2



FJ309-3



FJ310-1



FJ310-2



FJ310-3



FJ311-1



FJ311-2



FJ311-3



FJ312-1



FJ312-2



FJ312-3



FJ313-1



FJ313-2



FJ313-3



FJ314-1



FJ314-2



FJ314-3



FJ315-1



FJ315-2



FJ316-1



FJ316-2



FJ316-3



FJ317-1



FJ317-2



FJ317-3



FJ318-1



FJ318-2



FJ318-3



FJ319-1



FJ319-2



FJ319-3



FJ320-1



FJ320-2



FJ320-3

TR FIJI DESEN / RENK : 21/61  
 EN FIJI PATTERN / COLOUR : 21/61  
 RU FIJI ДИЗАЙН / ЦВЕТ : 21/61

# AMAZON

NON-WOVEN BACK  
POSTER/MURAL/ФОТООБОИ

TR *AdaWall, özenle tasarlayıp renklendirdiği bu kataloğunda kayıp bir cenneti, uzaktaki maceraları vadediyor. Posterlerdeki manzaralar bizi yemyeşil bitki örtüsüyle ormanın kalbine sokuyor, unutulmuş bir rüyanın tatlılığını yeşilin tonlarıyla birleştiriyor. Amazon koleksiyonu; evinizi enfes bir orman kokusuyla dolduruyor, büyük boy bitki ve hayvan resimleriyle iç mekanları ferah bir ormana dönüştürüyor. Siz yalnızca gözlerinizi kapatın ve doğanın şiirsel, zarif, ince ve lirik sesine kulak verin...*

EN *AdaWall promises a lost paradise and distant adventures in this catalogue which is carefully designed and colored. The landscapes in the posters make us see the forest with lush vegetation. It combines the sweetness of a forgotten dream with the shades of green. The Amazon collection fills your home with an exquisite forest scent. It transforms the interiors into a spacious forest with large plants and animal paintings. You just close your eyes and listen to the poetic, elegant, subtle and lyrical sound of nature...*

RU *AdaWall обещает потерянный рай и дальние приключения в этом каталоге, который тщательно разработан и раскрашен. Пейзажи на плакатах заставляют нас видеть лес с пышной растительностью. Он сочетает в себе сладость забытого сна с оттенками зеленого. Коллекция Amazon наполняет ваш дом изысканным лесным ароматом. Он превращает интерьеры в просторный лес с крупными растениями и рисунками животных. Вы просто закрываете глаза и слушайте поэтический, элегантный, тонкий и лирический звук природы ...*



A301-3



A301-1



A301-2



A301-3



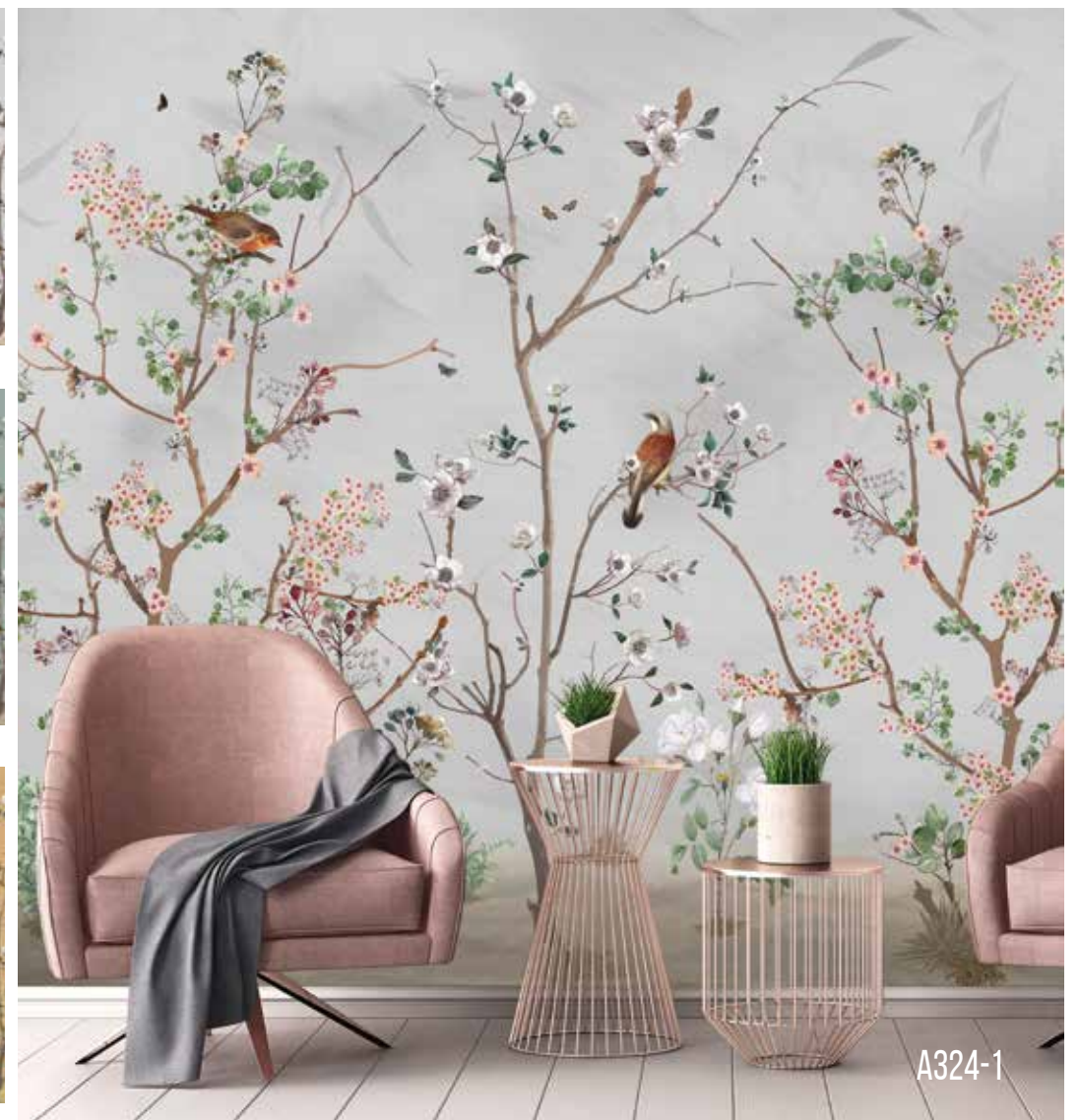
A324-1



A324-2



A324-3



A324-1



A311-1



A311-1



A311-2



A311-3



A303-1



A303-2



A303-3



A303-1





A315-2



A315-1



A315-2



A315-3



A305-1



A305-2



A305-3



A305-1



A318-1



A318-1



A318-2



A318-3



A300-1



A300-2



A300-3



A300-3

# AMAZON MURAL

## NON-WOVEN BACK PATTERNS



A300-1



A300-2



A300-3



A301-1



A301-2



A301-3



A302-1



A302-2



A302-3



A303-1



A303-2



A303-3



A304-1



A304-2



A304-3



A305-1



A305-2



A305-3



A306-1



A306-2



A306-3



A307-1



A307-2



A307-3



A308-1



A309-1



A309-2



A309-3



A310-1



A310-2



A310-3



A311-1



A311-2



A311-3



A312-1



A312-2



A312-3



A313-1



A313-2



A313-3



A314-1



A314-2



A314-3



A315-1



A315-2



A315-3



A316-1



A316-2



A316-3



A317-1



A317-2



A317-3



A318-1



A318-2



A318-3



A319-1



A319-2



A319-3



A320-1



A320-2



A320-3



A321-1



A321-2



A321-3



A322-1



A323-1



A324-1



A324-2



A324-3

TR AMAZON DESEN / RENK : 25/69  
 EN AMAZON PATTERN / COLOUR : 25/69  
 RU AMAZON ДИЗАЙН / ЦВЕТ : 25/69



MG2001-1

# MOULDING

NON-WOVEN BACK

POSTER/MURAL/ФОТООБОИ

**TR** Tarihe ve geleneğe sadık bir marka olan AdaWall, yüzyıllar boyunca sanat tarihinde büyük bir yer edinmiş rölyef motiflerini modern çizgilerle harmanlayarak sizlerin beğenisine sunuyor. Zengin ve gösterişli motifleri tıpkı bir heykeltıraşın ellerinden çıkmış gibi çağımıza yakışır şekilde zerafet ve kaliteyle buluşturuyor.

Modern ve klasik tarzların harmanıya oluşturulan bu koleksiyon her tarza uygun olarak tasarlanmıştır. İlham kaynağını klasik süslemelerden alan Moulding Koleksiyonu sade ve sanatsal dokunuşlarla modernize edilmiştir.

Koleksiyondaki ürünlerin tümü birbirinden farklı tasarımlara sahiptir.

Adawall'un Moulding kataloğu tarihten aldığı ilhamla duvarlarınızı estetik ve şık detaylarla kaplayarak evinize yepyeni bir tarz katacak.

**EN** Adawall being a respectful company to both history and tradition, blends relief motifs that have gained a great place in the history of art for centuries with some modernity and presents them to you. It combines rich and ostentatious motifs with elegance and quality, just as it has come out of a sculpture's hand. Created with a blend of modern and classic styles, this collection is designed for every style. Moulding Collection, which draws its inspiration from classical ornaments, has been modernized with simple yet artistic touches. All of the products in the collection have different designs.

Adawall's Moulding Collection, with inspiration from history, will add a brand new style to your home by covering your walls with aesthetic and stylish details.

**RU** Компания Adawall, уважающая как историю, так и традиции сочетает рельефные мотивы, которые веками занимали важное место в истории искусства с некоторой современностью и представляет их вам. Компания Adawall сочетает в себе богатые и показные мотивы с элегантностью и качеством, как будто он создан вручную скульптурой. Эта коллекция, созданная на основе сочетания современного и классического стилей, предназначена для любого стиля. Коллекция Molding Collection, вдохновленная классическими орнаментами была модернизирована с использованием простых, но художественных элементов. Все изделия коллекции имеют разный дизайн.

Коллекция Molding от Adawall вдохновленная историей, она добавит вашему дому совершенно новый стиль, украсив стены эстетическим и стильным дизайном.



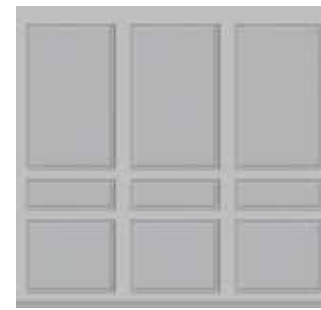
MG2005-1



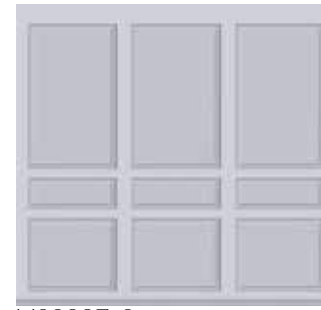
MG2005-2



MG2005-3



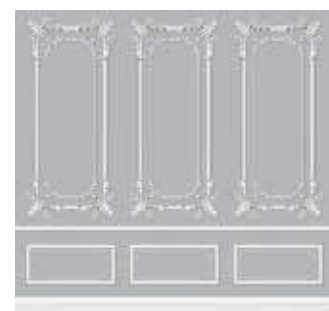
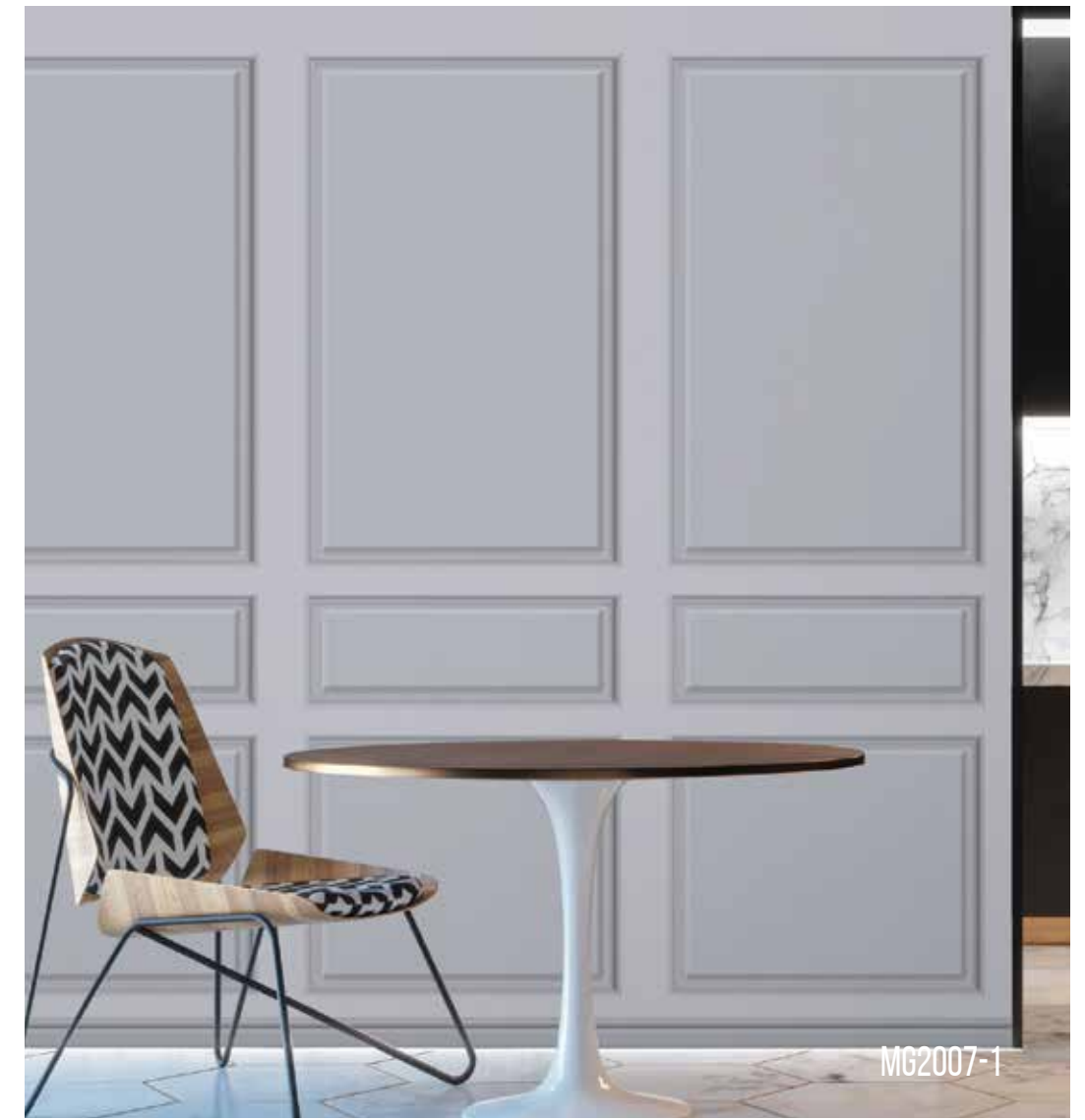
MG2007-1



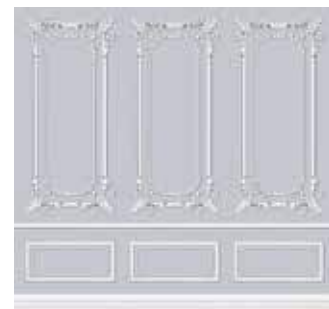
MG2007-2



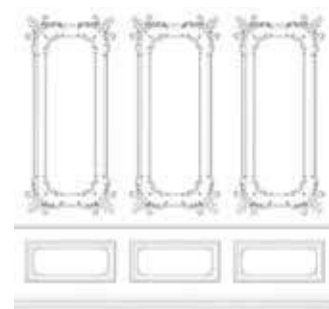
MG2007-3



MG2015-1



MG2015-2



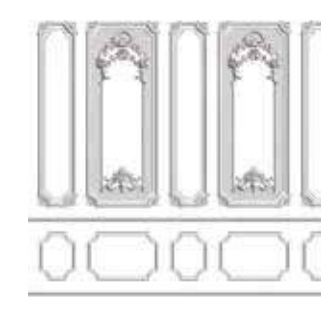
MG2015-3



MG2008-1



MG2008-2



MG2008-3

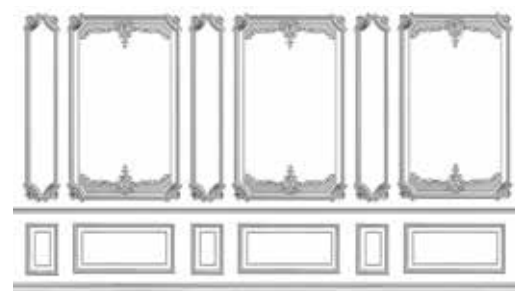




MG2016-1



MG2016-2



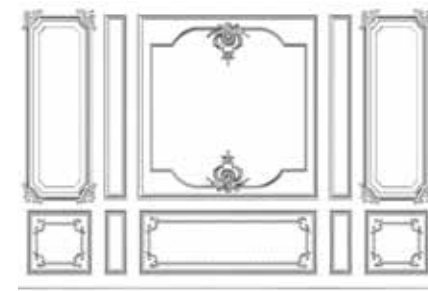
MG2016-3



MG2006-1



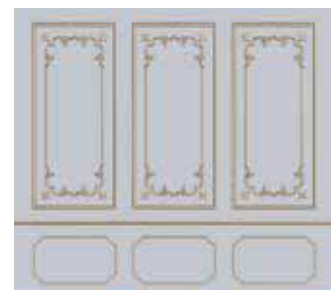
MG2006-2



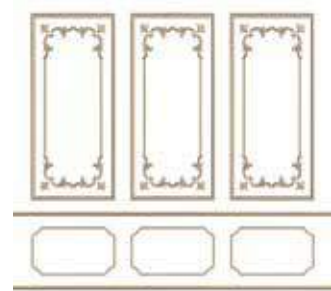
MG2006-3



MG2014-1



MG2014-2



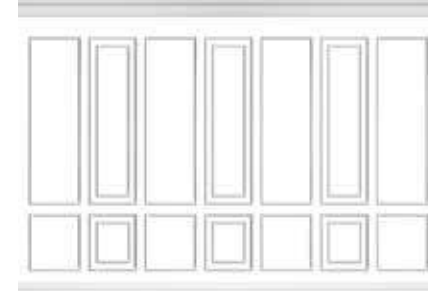
MG2014-3



MG2003-1



MG2003-2



MG2003-3

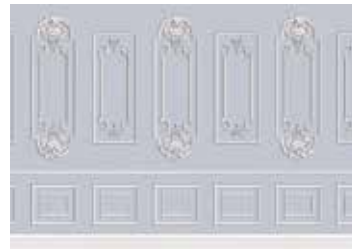


# MOULDING MURAL

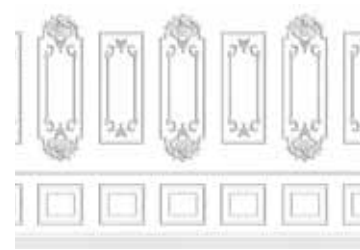
## NON-WOVEN BACK PATTERNS



MG2001-1



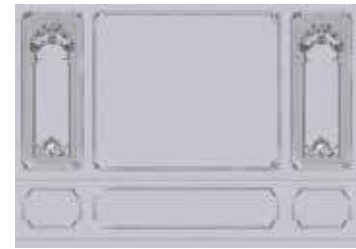
MG2001-2



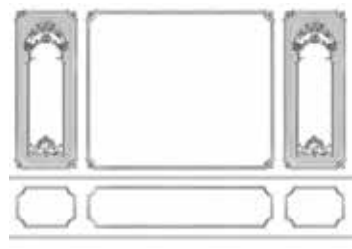
MG2001-3



MG2002-1



MG2002-2



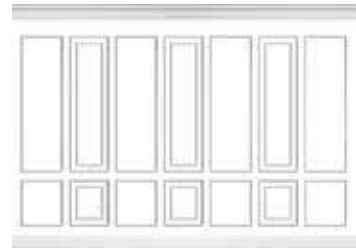
MG2002-3



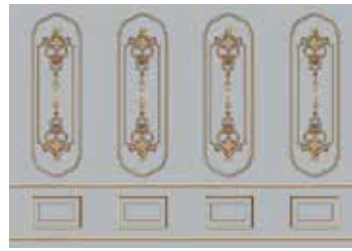
MG2003-1



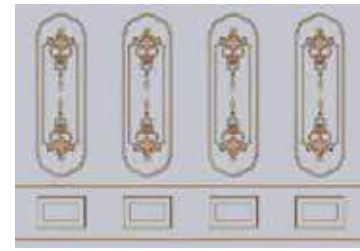
MG2003-2



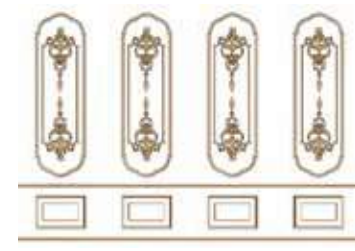
MG2003-3



MG2004-1



MG2004-2



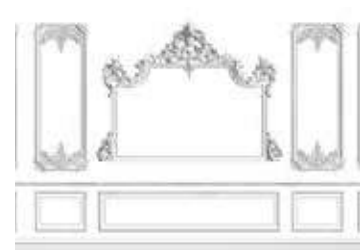
MG2004-3



MG2005-1



MG2005-2



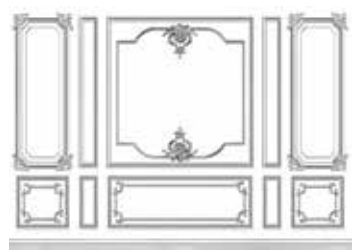
MG2005-3



MG2006-1



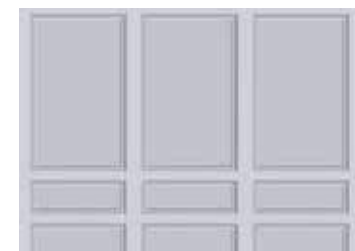
MG2006-2



MG2006-3



MG2007-1



MG2007-2



MG2007-3



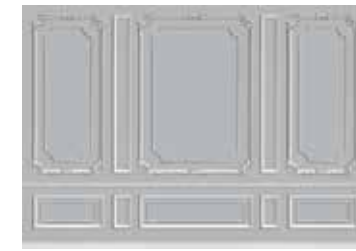
MG2008-1



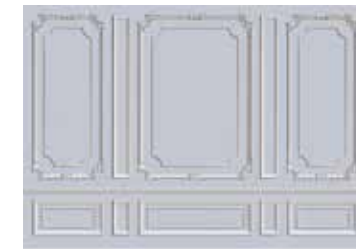
MG2008-2



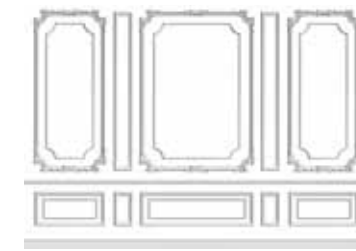
MG2008-3



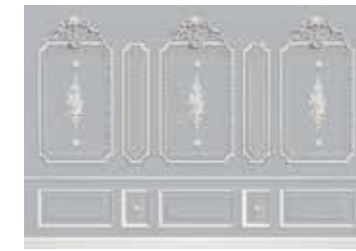
MG2009-1



MG2009-2



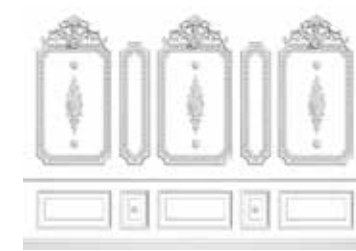
MG2009-3



MG2010-1



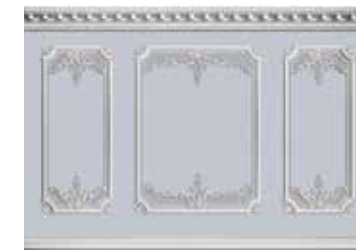
MG2010-2



MG2010-3



MG2011-1



MG2011-2



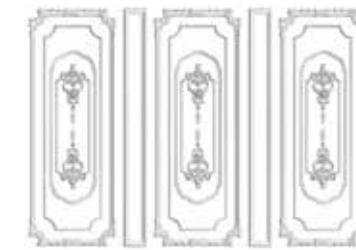
MG2011-3



MG2012-1



MG2012-2



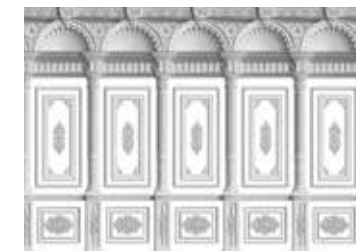
MG2012-3



MG2013-1



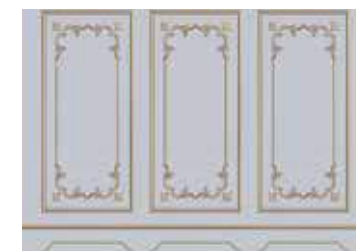
MG2013-2



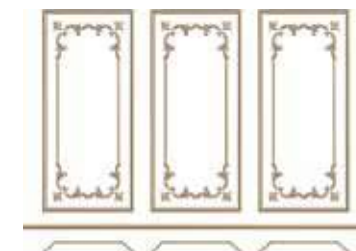
MG2013-3



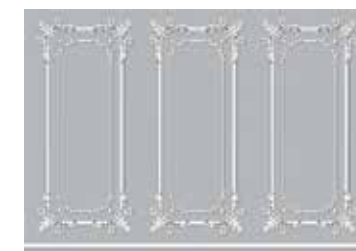
MG2014-1



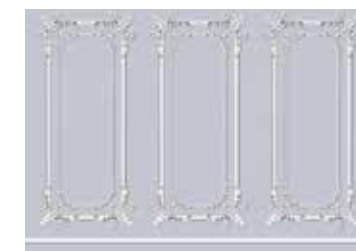
MG2014-2



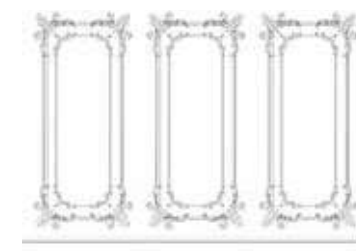
MG2014-3



MG2015-1



MG2015-2



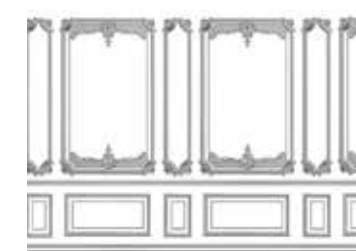
MG2015-3



MG2016-1



MG2016-2



MG2016-3

TR MOULDING DESEN / RENK : 16/48  
 EN MOULDING PATTERN / COLOUR : 16/48  
 RU MOULDING ДИЗАЙН / ЦВЕТ : 16/48



WB2061

# ADAKIDS

## NON-WOVEN BACK POSTER/MURAL/ФОТООБОИ

**TR** *Küçük çocuklar hayal eder. Daha büyük olmayı hayal eder. Kahraman olmayı hayal eder. İster DC Süper Kahramanlar, isterse sevilen animasyon karakterleri olsun, bu efsanevi karakterler hayal gücünü bir çocuğun dünyasına uyacak şekilde yakalar ve teşvik eder. Bu anında tanınabilir ve istek uyandıran karakterler, çocukların sadece süper kahramanlar gibi değil, aynı zamanda süper kahramanlar gibi rol oynamalarına da izin verir: Batman ve Süpermen, Tom ve Jerry, dostluk temalarını pekiştirir, aynı zamanda kardeş bir rekabeti yansıtır -arkadaşların en iyisidir, aynı zamanda en iyi düşman! Looney Tunes, bir çocuğun hayatına yüksek enerjili mizah ve eğlence getiriyor. Çocuklar bu karakterleri televizyon aracılığıyla, ebeveynleriyle alışveriş yaparak ve çoğunlukla oyuncak ve giyim sektöründe tanır. ADAKIDS, duvar kağıtlarımız biçiminde, bu karakterleri çocuklar için kendi yatak odalarında hayata geçiriyor.*

**EN** *Little children dream. They dream of being bigger. They dream of being a hero. Whether it's the DC Super Heroes or the well-loved animation characters, these legendary characters capture and stimulate the imaginations in a way that fits into a child's world. These instantly recognizable and aspirational characters allow kids to role play, not just as any superheroes but as the ultimate superheroes: Batman and Superman, Tom and Jerry reinforce the themes of friendship but reflect a sibling rivalry -the best of friends but also the best enemies! The Looney Tunes bring high-energy humour and fun to a child's life. Children know these characters through television, shopping with their parents and mostly in the toy and clothing sector. ADAKIDS brings these characters to life for children in their bedrooms in the form of our wallpapers.*

**RU** *Маленькие дети мечтают. Они мечтают стать взрослыми. Они мечтают стать героями. Будь то супергерои DC или любимые анимационные персонажи, эти легендарные персонажи захватывают и стимулируют воображение таким образом, что вписываются в мир ребенка. Эти, мгновенно узнаваемые, и вдохновляющие персонажи, позволяют детям играть в ролевые игры не просто как супергерои, а как настоящие герои. Супергерои: Бэтмен и Супермен, Том и Джерри усиливают темы дружбы, но отражают соперничество между братьями и сестрами - лучшие друзья, но и лучшие соперники! The Looney Tunes привносят высокую энергию юмора и веселье в жизнь ребенка. Дети знают этих персонажей из телевизора, шопинга с родителями и, в основном, из сферы игрушек и одежды. ADAKIDS воплощает в жизнь эти символы для детей в собственных спальнях в виде наших обоев.*



WB2144



WB2144-3 315X280CM



WB2144-4 420X280CM



WB2144-5 525X280CM



WB2079-3 315X280CM



WB2079-4 420X280CM



WB2079-5 525X280CM



WB2079



WB2076



WB2076-3 315X280CM



WB2076-4 420X280CM



WB2076-5 525X280CM



WB2026-3 315X280CM



WB2026-4 420X280CM



WB2026-5 525X280CM



WB2026





WB2086



WB2086-3 315X280CM



WB2086-4 420X280CM



WB2086-5 525X280CM



WB2121-4 420X280CM



WB2121-5 525X280CM



WB2121



WB2073



WB2073-3 315X280CM



WB2073-4 420X280CM



WB2073-5 525X280CM



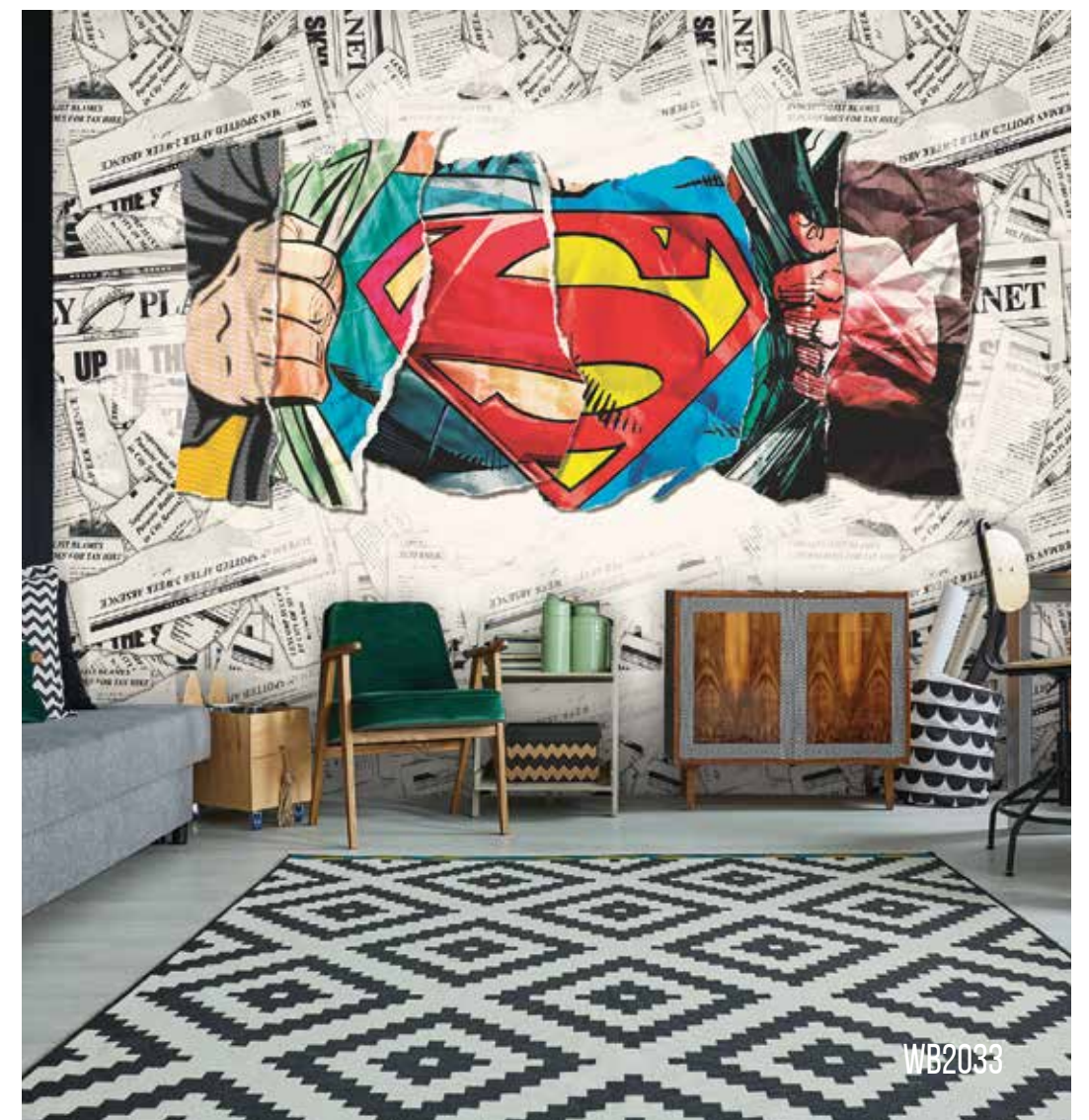
WB2033-3 315X280CM



WB2033-4 420X280CM



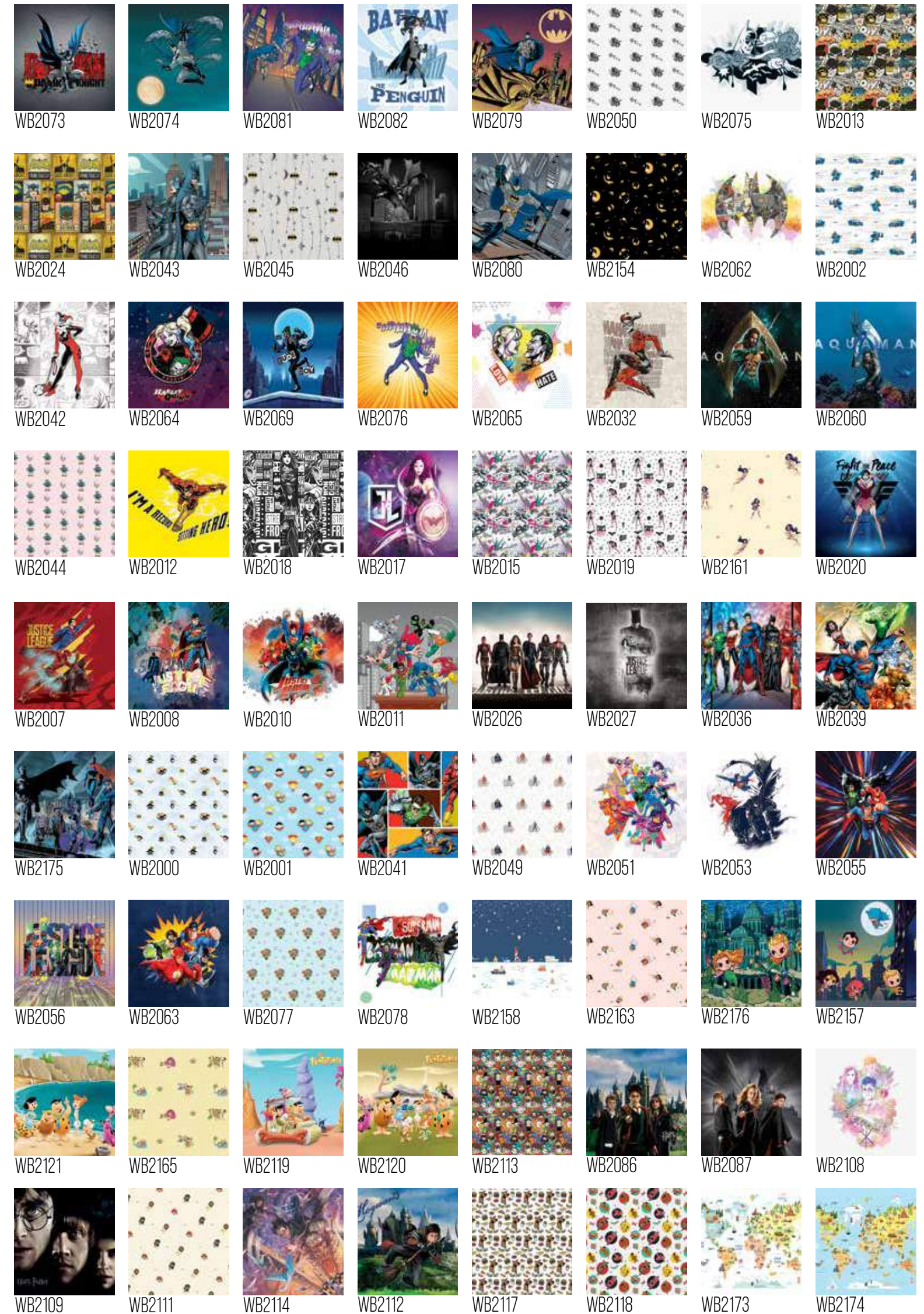
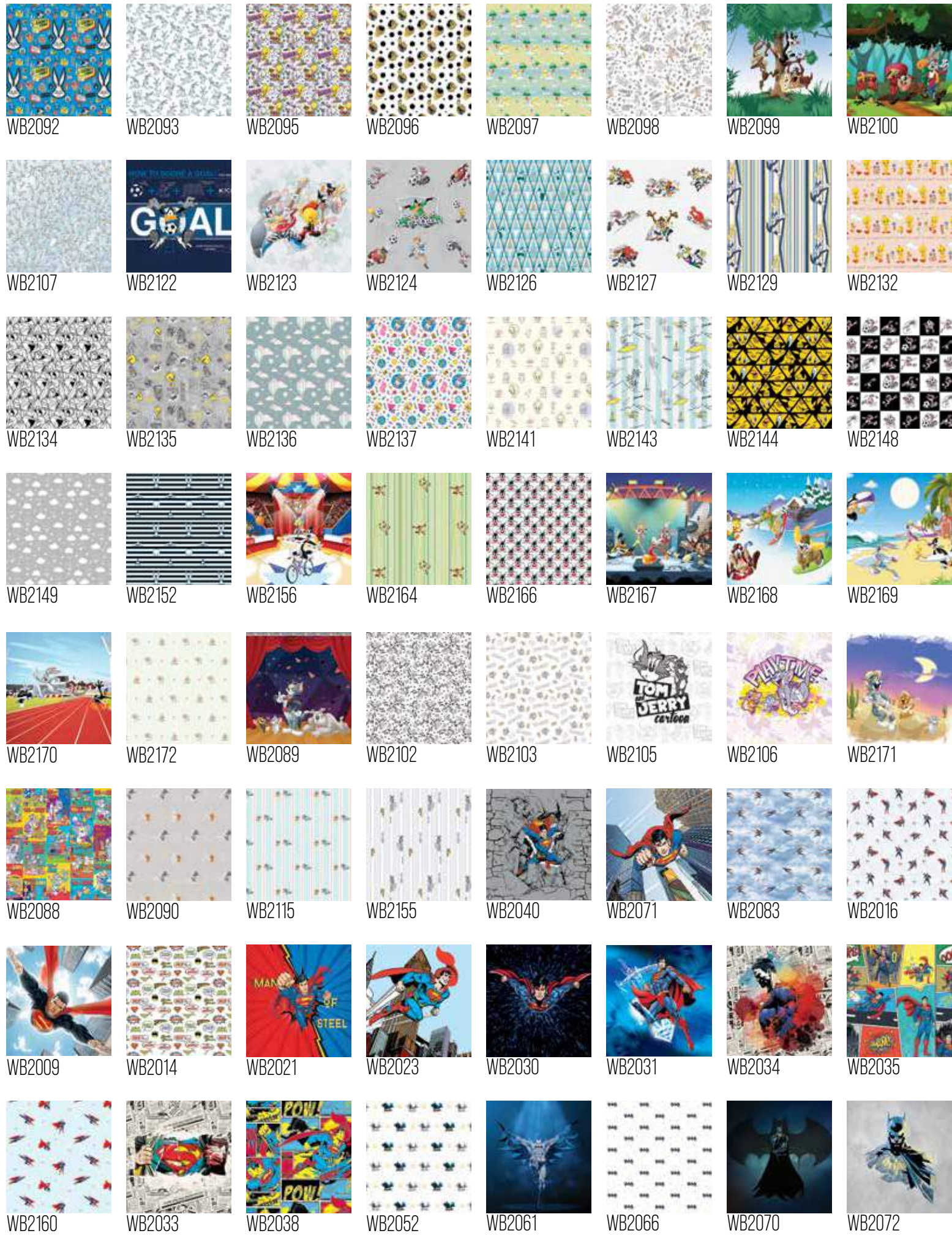
WB2033-5 525X280CM



WB2033

# ADAKIDS MURAL

## NONWOVEN BACK PATTERNS



TR ADAKIDS DESEN : 136  
 EN ADAKIDS PATTERN : 136  
 RU ADAKIDS ДИЗАЙН : 136

# POSTER

## POSTER (MURAL) INSTALLING INSTRUCTIONS

### 1-Checking The Product

Check the panel number and pattern before applying the wallpaper adhesive. First, lay panels face down on a flat surface and ensure the panel patterns match with each other. Then, apply the adhesive at the back of wallpaper.

### 2. Applying The Product

After you make sure the first and the second panel overlap all joining edges by 0,3mm or 0,7mm, start installing the product. (Repeat steps for remaining panels)

### 3. Trimming The Joining Edges

Use a straight edge and cut off the excess edges carefully with a knife.

### 4. Completing The Installation

Apply the panel onto the wall using a soft dry cloth or a rubber squeegee. Work from top to bottom taking extra care not to overwork each panel.

## USEFUL TIPS FOR THE INSTALLATION

1. Make sure wall surface clean and smooth.
2. During the installation, the adhesive must be evenly applied between the wall and the product by using a spud or a brush.
3. After wallpaper adhesive, installation of the product must be finished in 10-20 min.
4. Since the placement of the first panel determines the overall look of the finished mural, take extra time and care to place it accurately. Use a level and a plumb line.
5. First, make sure the second pattern overlaps the first one on the joining edges by approximately 0,3mm-0,7mm. Then hang the remaining panel.
6. Take extra care to make sure not to get adhesive on the patterned side whilst joining the edges. Hard objects like spuds and rollers can harm the surface of the product. They must be used with extra care.
7. The backside of the product is nonwoven paper and is produced in 105 cm width. Special order in different designs is available. For further information please contact with our team.

## MURAL TEXTURES & MATERIAL

### 1-Textile Back

We would like to announce that we have started the production of Textile Backed Posters / Murals. Our textile back wallpaper has 300cm height and the weight is 285gr / m<sup>2</sup>. We can print all our Mural designs or your custom designs in one piece as 1 roll. Therefore, there is no joint lines on your design anymore. Please contact us for your Textile Backed / Vinyl Surface Mural orders.

### SAMPLE



Gold



Silver



Pearl



White

### 2-NonWoven Back

Our nonwoven back wallpaper has 105cm height and the weight is 280gr / m<sup>2</sup>. When you want to print on nonwoven-based paper in the dimensions you want, the number of pieces will change according to your wall size. We can print all our Mural designs or your custom designs in five different texture nonwoven backed paper. Please contact us for your Textile Backed / Vinyl Surface Mural orders.

### SAMPLE



Texture1



Texture2



Texture3



Texture4



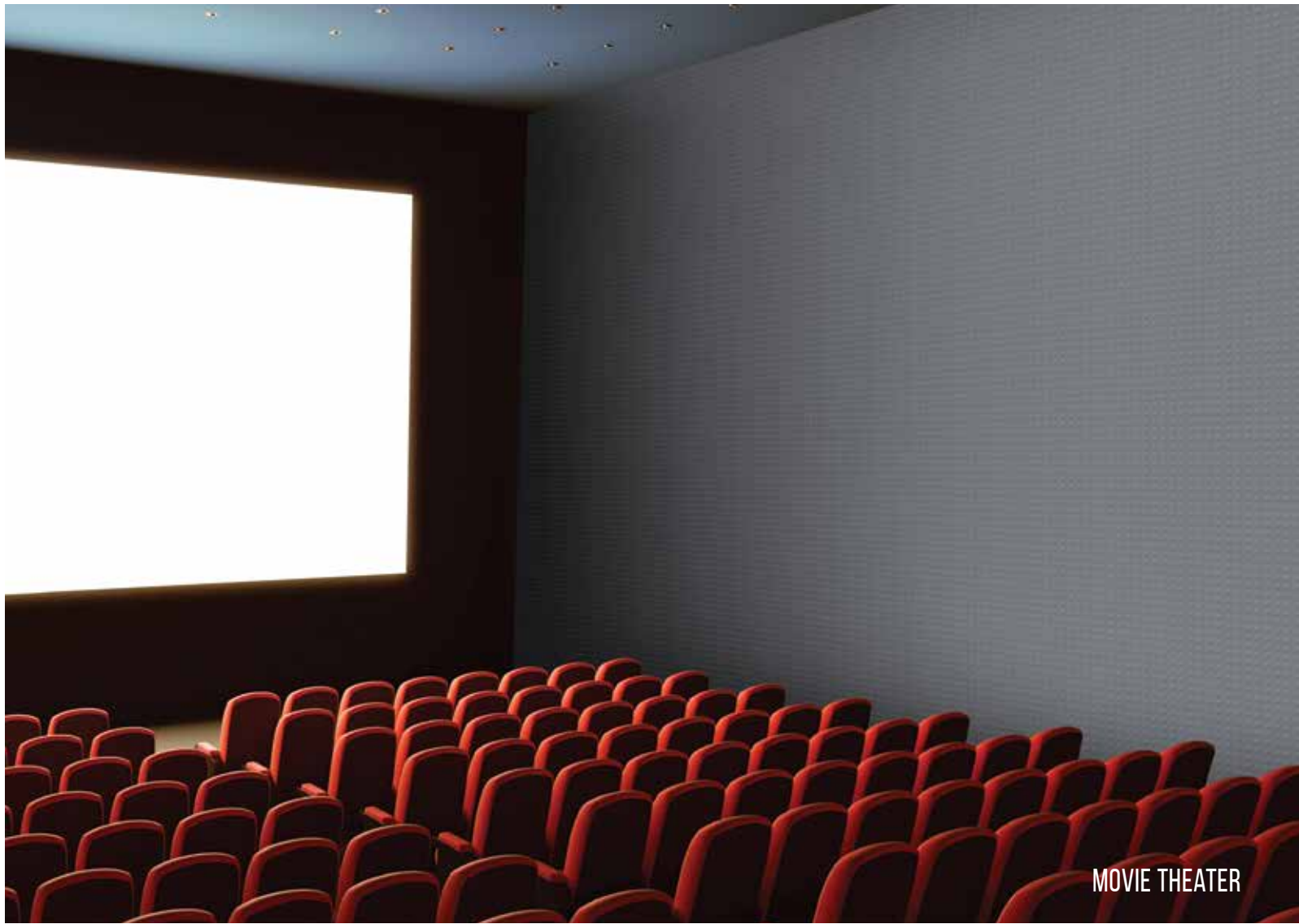
Texture5

# AKUSTİK DUVAR KAĞIDI ACOUSTIC WALLPAPER АКУСТИЧЕСКИЕ ОБОИ

TR Gürültü, zaman zaman farkında olduğumuzda bizi rahatsız edip kaçırır, zaman zaman ise farkında olmadığımız fakat bizi içten içe yoran bir çevre unsurudur. Buna nazaran tasarımcılar ve iç mimarlar daha çok göze hitap eden çalışmalar yapıyorlar ve bu durumu atlıyorlar. Fakat artık kulağa hitap eden çalışmalar yapmanın vakti geldi. AdaWall, bu iş için kolları sıvadı ve Dünyada bir ilk olan AdaWall Akustik Duvar Kâğıdı serisini oluşturdu.

EN Noise is an environmental element that sometimes make us escape when we are aware of it, and sometimes we are unaware of it, but annoys us deeply. Besides these designers and interior architects try to make works which mostly appeal to the eye, they do not consider this. But it is time to make works which appeal to ear any more. AdaWall gets ready to do this and has produced to the first AdaWall Acoustic Wallpaper series in the World.

RU Шум- это элемент окружающей среды, который когда мы его осознаем раздражает нас и которого мы избегаем, а когда не осознаем его, является причиной навалившейся на нас усталости. Несмотря на это, дизайнеры и архитекторы по внутренней отделке проводят работы, которые в большей степени воспринимаются визуально и упускают из виду эту ситуацию. Но теперь настало время обратить внимание на работы, которые влияют на наш слух. AdaWall закатали рукава для выполнения этой задачи и создали серию акустических обоев AdaWall.



MOVIE THEATER



RESTAURANTS



OFFICE

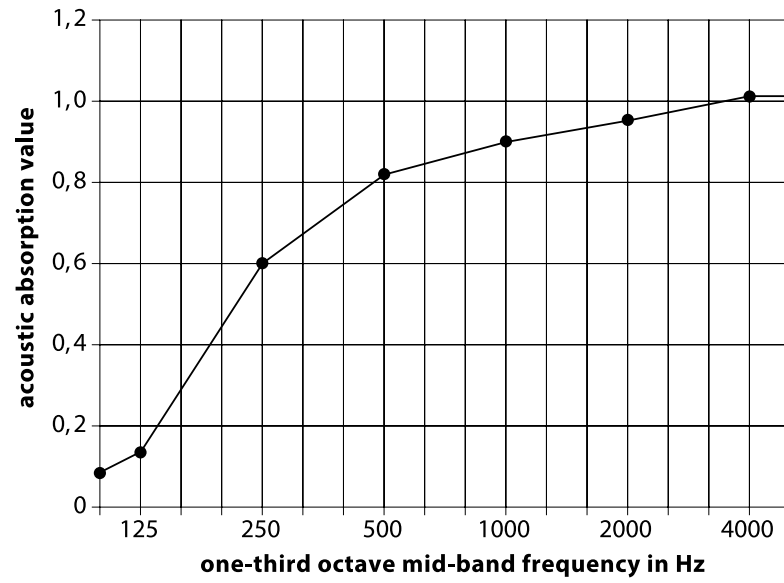


SOUND STUDIOS

## ACOUSTIC WALLPAPER SPECIFICATIONS



- Width / En: 145cm
- Length: Customise Size  
Uzunluk: İstenilen Ebatta
- Weight / Ağırlık: 300 grm / m<sup>2</sup>
- Thickness / Kalınlık: 2.2 mm
- Surface / Yüzey: Trevira, Textile  
Back Side / Arka Yüzey: Non-Woven
- Flame / Alev Almazlık  
B-s1, d0 DIN EN 13501-1
- Customise Design  
Kişiyi Özel Tasarım
- Acoustic absorption value  $\alpha_w$ : 0.85  
Acoustic absorption class: B



Type of assembly E-50 according to DIN EN ISO 354. Textile in front of total 50 mm, included 2 x 20 mm ISOVER SSP 2 and 10 mm airspace. **Test Report No: 048-15-L02\_rev00**



## ACOUSTIC WALLPAPER

### APPLICATION INSTRUCTION

#### PRODUCT CONTROL

Check the order, color, and pattern of the product, if available, before applying the glue. Check if there is a defect in the product by placing it on a surface. If your acoustic wallpaper is patterned (not a solid color), you can start the application after making sure that the pattern in each part matches with the other one on the corresponding part.

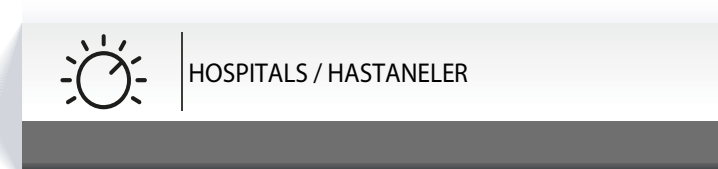
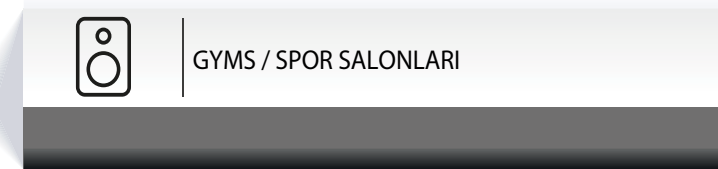
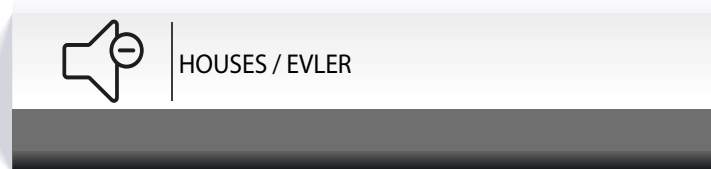
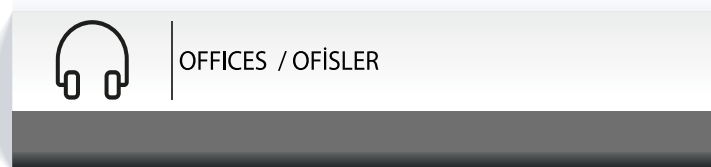
#### PRODUCT APPLICATION

1. The surface of the wall to be applied should be completely clean and smooth.
2. Apply wallpaper glue to the back of the Acoustic Wallpaper. You should use a brush to distribute the glue evenly behind the acoustic wallpaper.  
**DO NOT FOLD THE GLUE APPLIED ACOUSTIC WALLPAPER!**
3. Glue applied acoustic wallpaper must be applied within 10-20 minutes.
4. Make sure that the first part to be pasted is leveled and smooth when pasting. If you are using a spatula or trowel for sticking the acoustic wallpaper to the wall, make sure that the spatula or trowel does not damage the wallpaper surface. You can damage the product's surface if you don't use the tools such as trowel, spatula and roller gently.
5. During the application, make sure that the glue does not come out on the surface of the acoustic wallpaper.
6. Apply the first part to the wall, and apply the second part next to it. If there is a pattern in the product, match the patterns and continue the application.
7. If there are any adhesive stains left on the surface of the product, wipe them off with a dry sponge.

#### RECOMMENDATIONS FOR THE APPLICATION OF THE PRODUCT IN LIVING SPACES

1. Applying acoustic wallpapers on opposite walls will increase the acoustic efficiency of the room.
2. Glass products in the room (such as windows) may disrupt the acoustics of the space.
3. In the places where you applied acoustic wallpaper, pay attention to closing the curtains of the windows.
4. You can also apply our acoustic wallpaper to the ceiling of your room. For a professional acoustic environment, application of the product to 4 walls and ceilings creates the most efficient acoustic environment.

## USAGE AREAS



**AdaWall**  
 Dreams Made of Wallpaper  
**WALLCOVERING PASTES**



200 gr / 25 kg



1 kg

We have 2 kind of Wallpaper Glue. ADAWALL PREMIUM POWDER and ADALIT. Both of them usefull for our wallpaper collections, mural collections and acoustic wallpaper.

**1) WALLPAPER POWDER ADHESIVES:** 200 grm in a sachet OR 25 kg in paper sack  
 You should mix our powder adhesive with water. You can find all water ratio information on the glue package or on the bucket. What is more; we have also special plastic bucket to mix the powder adhesive with water. Please watch the youtube video:

<https://www.youtube.com/watch?v=QfzEWX9Gc98&t=3s>

Our bucket is easiest way to prepare your wallpaper glue. Because you can find all ratio information on it. You can buy from us single bucket or installation (hanging) kit. AdaWall installation kit is include all equipments of installation. (5 pcs 200 gr powder glue, 1 spatula, 1 knife, 1 sponge, 1 brush, 1 bucket)

**2) STRONG CREAM ADHESIVE:** 1 kg (Adhesive strengthener)

This is ready to use strong glue. You can open and use directly. No need mix with water. When you use directly you will get very very strong glue, it is usefull for high degree humadity area. In addition to this you can add into the ready blend (powder glue & water) and get very strong glue too. You can use with 2 prescriptions safely.

**3) HANGING KIT:** Our bucket is easiest way to prepare your wallpaper glue. Because you can find all ratio information on it. You can buy from us single bucket or installation (hanging) kit. AdaWall installation kit is include all equipments of installation. (5 pcs 200 gr powder glue, 1 spatula, 1 knife, 1 sponge, 1 brush, 1 bucket)



**AdaWall**  
 Dreams Made of Wallpaper  
**WALLCOVERING PASTES**

**PACKING DETAILS**

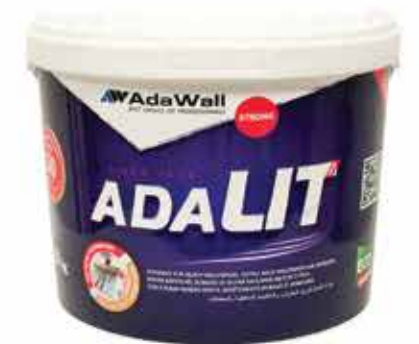
**POWDER ADHESIVE**

200 GR POWDER ADHESIVE = ( 1 BOX = 24 PCS ) & ( 1 PALETTE = 84 BOX = 2016 PCS )

25 KG POWDER ADHESIVE = ( 1 PALETTE = 21 PCS )z

**ADALIT ADHESIVE**

1 KG CREAM ADHESIVE = ( 1 BOX = 8 PCS ) & ( 1 PALETTE = 70 BOX = 560 PCS )



**MSDS REPORTS**

